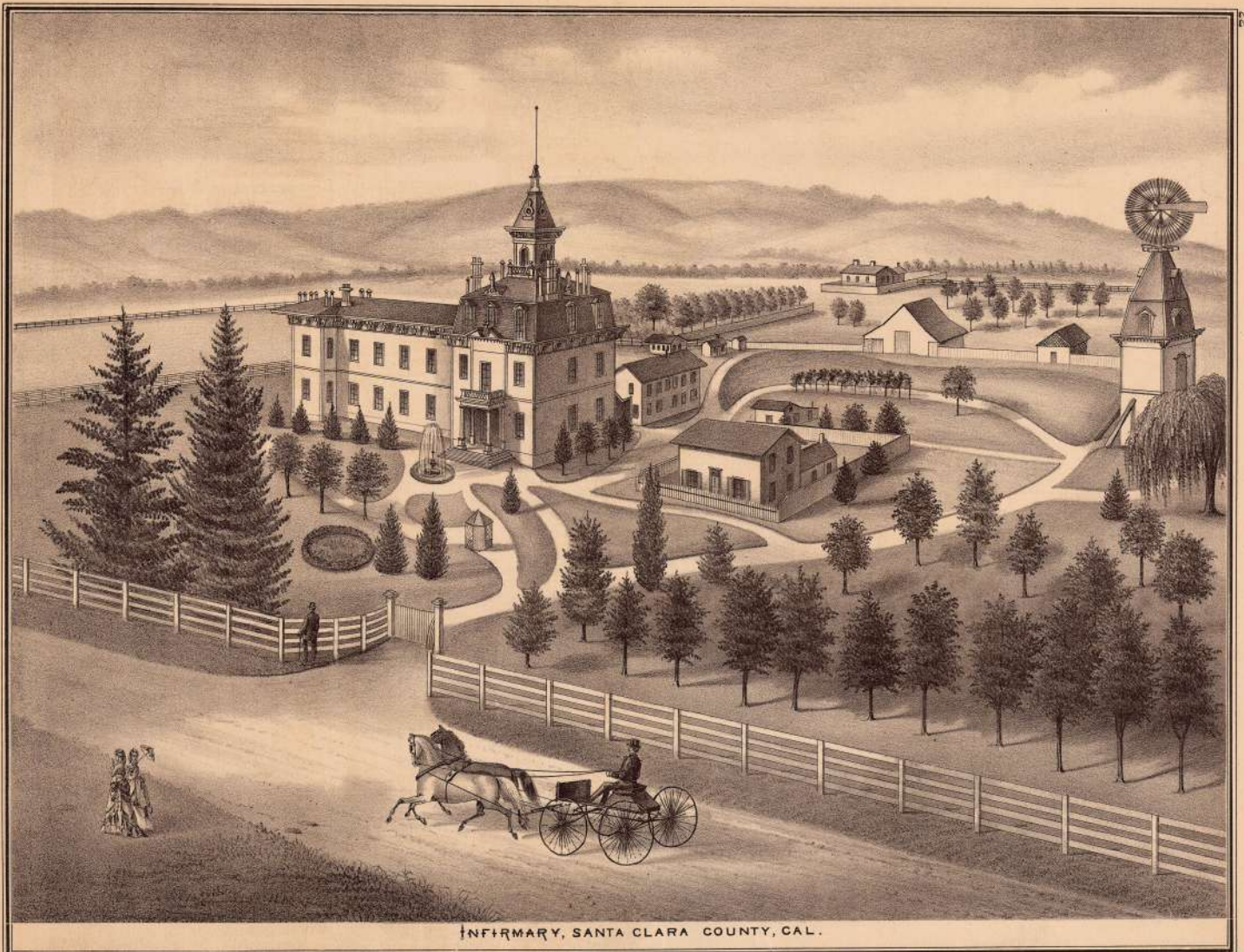


JAIL.

COURT HOUSE,
SANTA CLARA CO., AT SAN JOSE, CAL.



INFIRMARY, SANTA CLARA COUNTY, CAL.

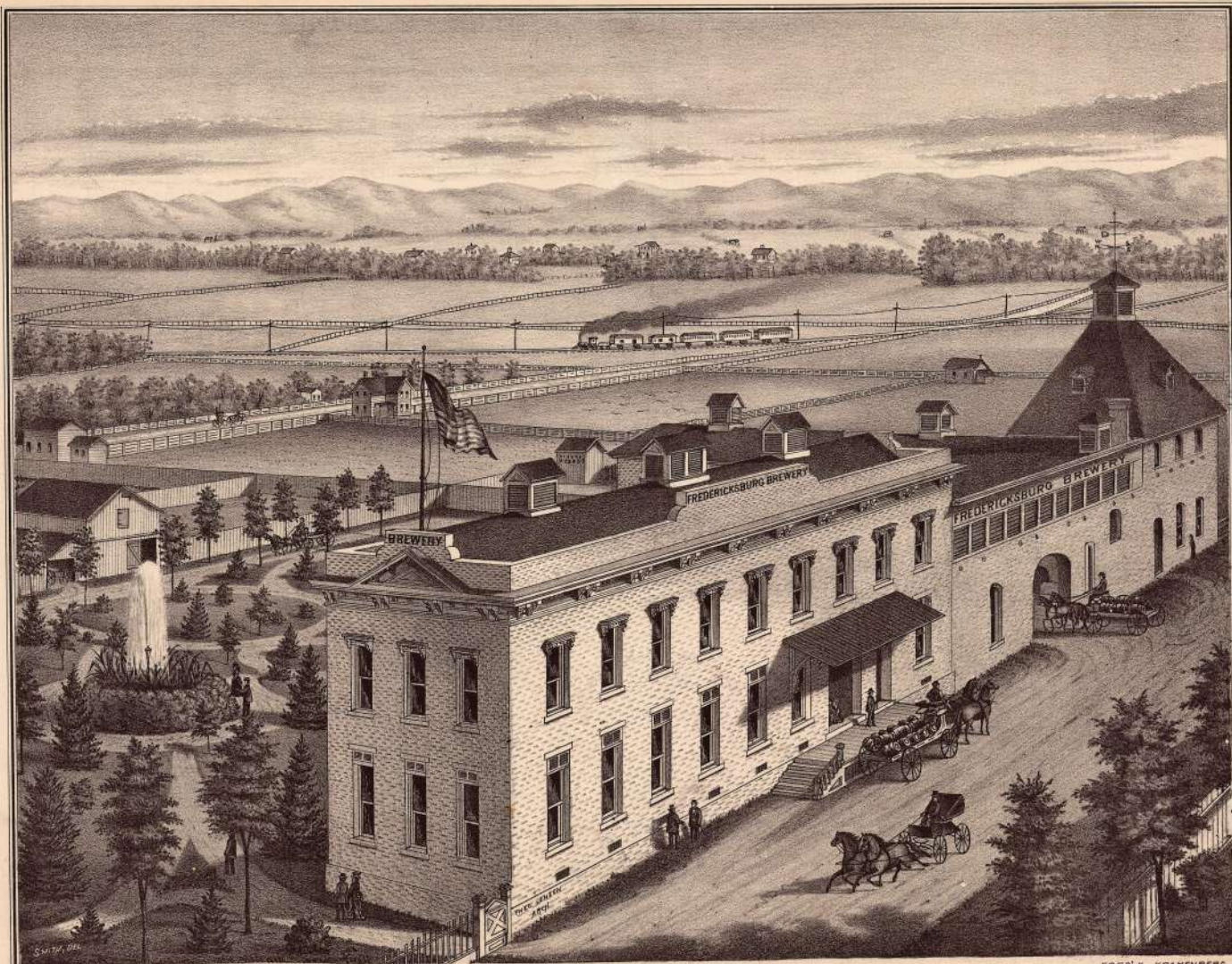


THE BANK OF SAN JOSE

SMITH DEL.
 T. ELLARD BEANS, PRESIDENT.
 CLEMENT T. PARK, CASHIER.
 C. W. POMEROY, SECRETARY.

THE BANK OF SAN JOSE.

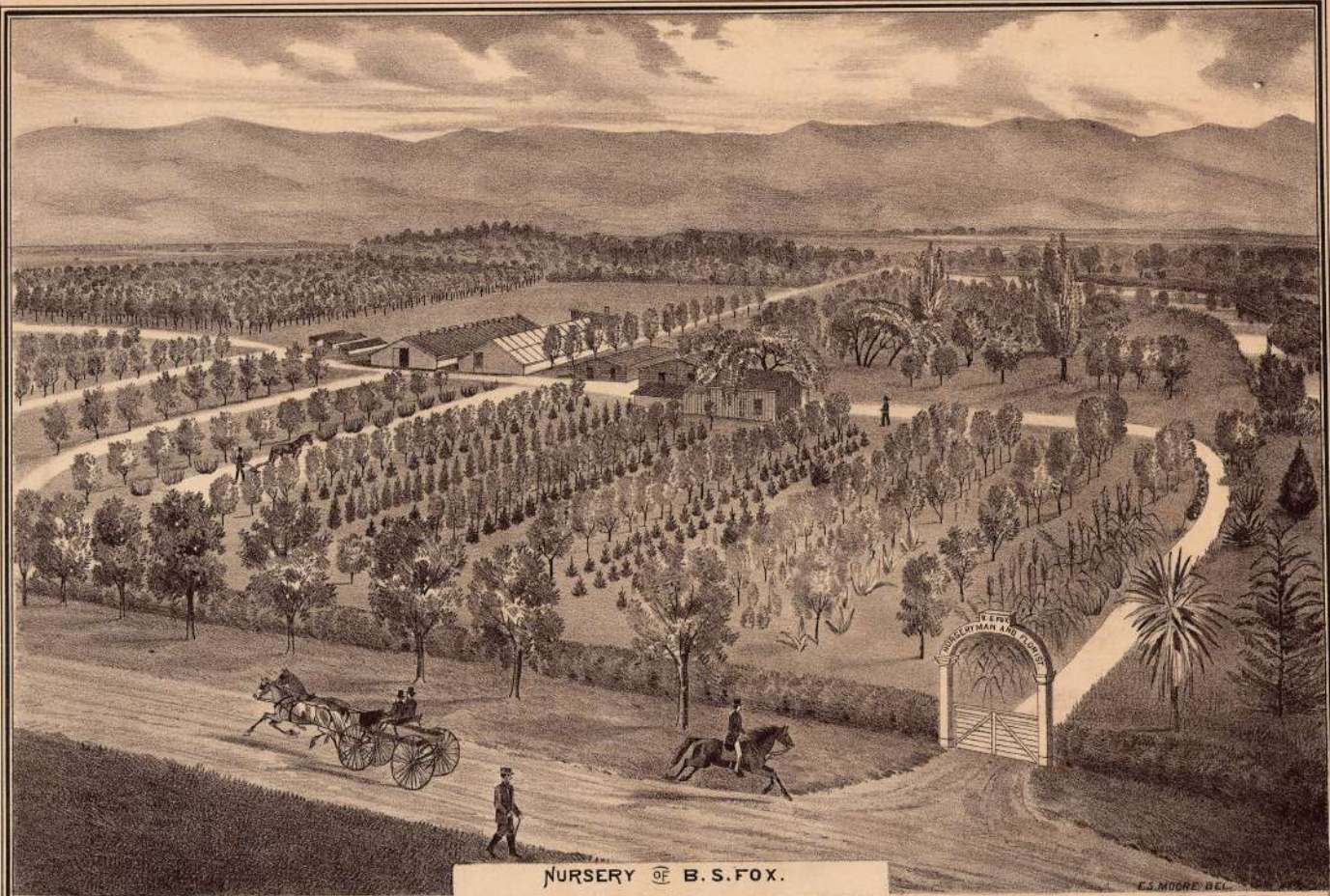
TRUSTEES.
 A. PFISTER,
 C. W. POMEROY,
 T. ELLARD BEANS.



ERNST SCHNABEL.
CLAUS H. SCHRAM.

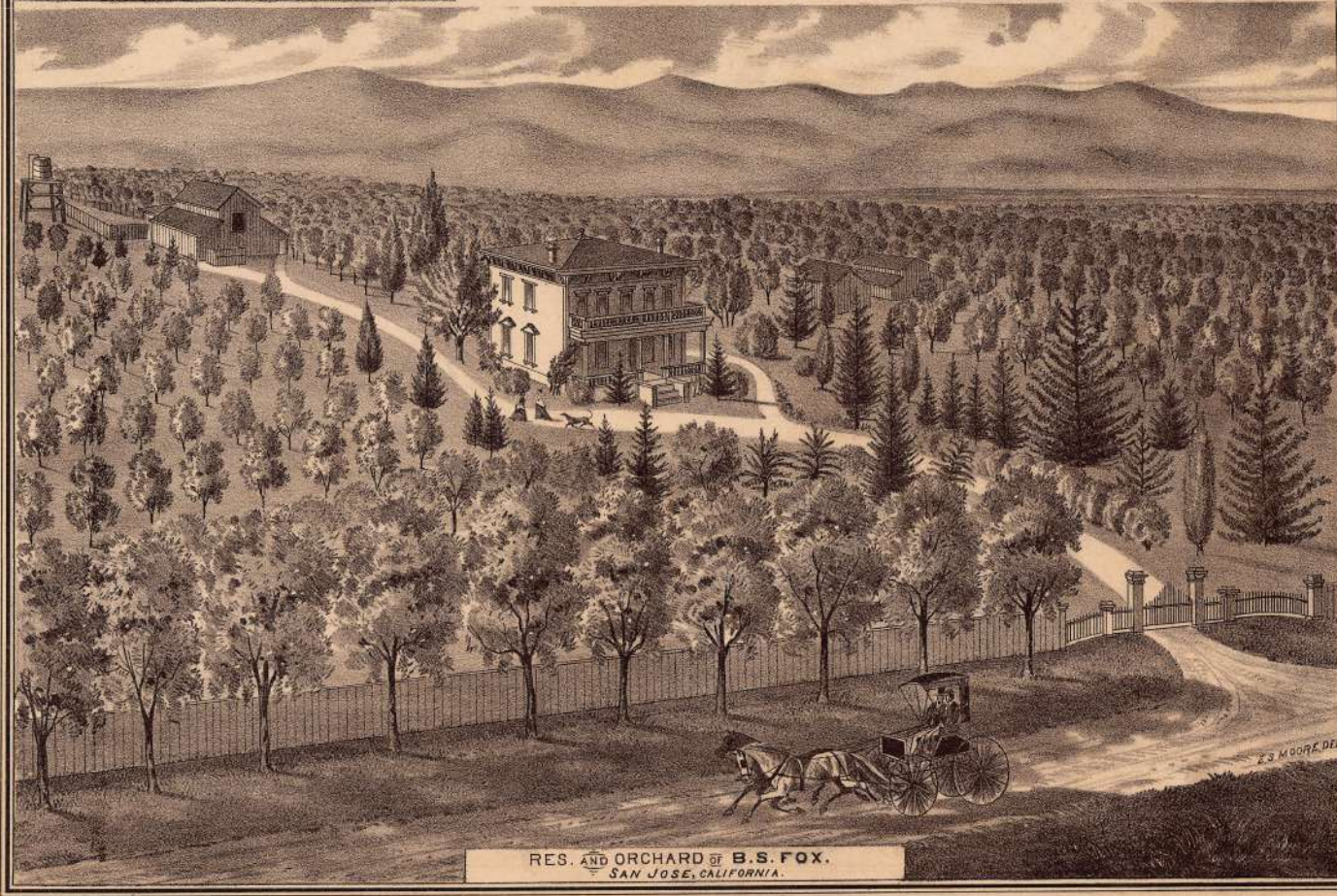
FREDERICKSBURG BREWERY.
KRAMENBERG & CO., PROPRIETORS.

FRED' K KRAMENBERG



NURSERY OF B.S. FOX.

E.S. MOORE DEL.



RES. AND ORCHARD OF B.S. FOX.
SAN JOSE, CALIFORNIA.

E.S. MOORE DEL.



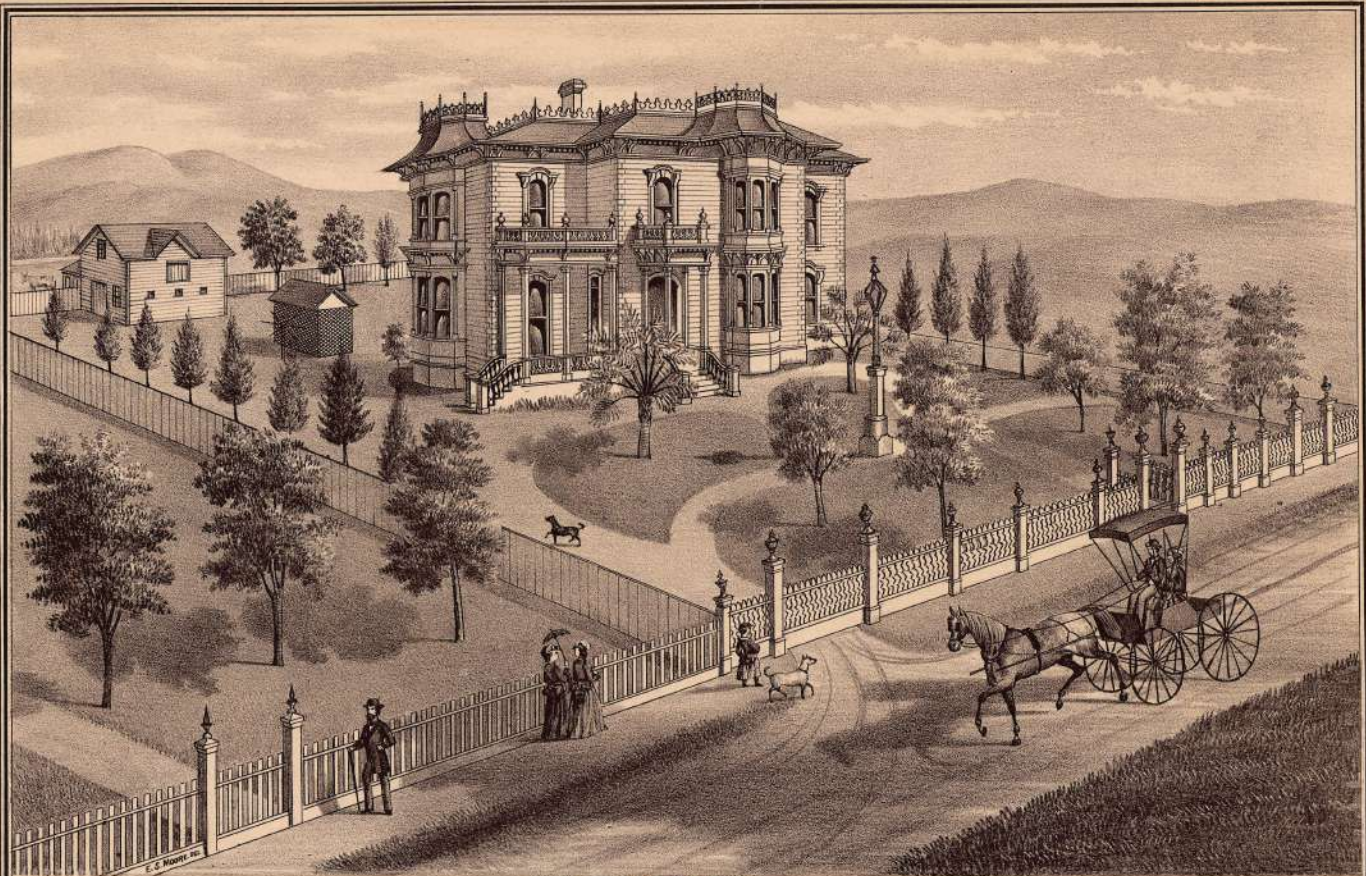
RES. OF J. S. CARTER, ESQ.
FIRST ST. SAN JOSE.

G. L. SMITH, DEL.

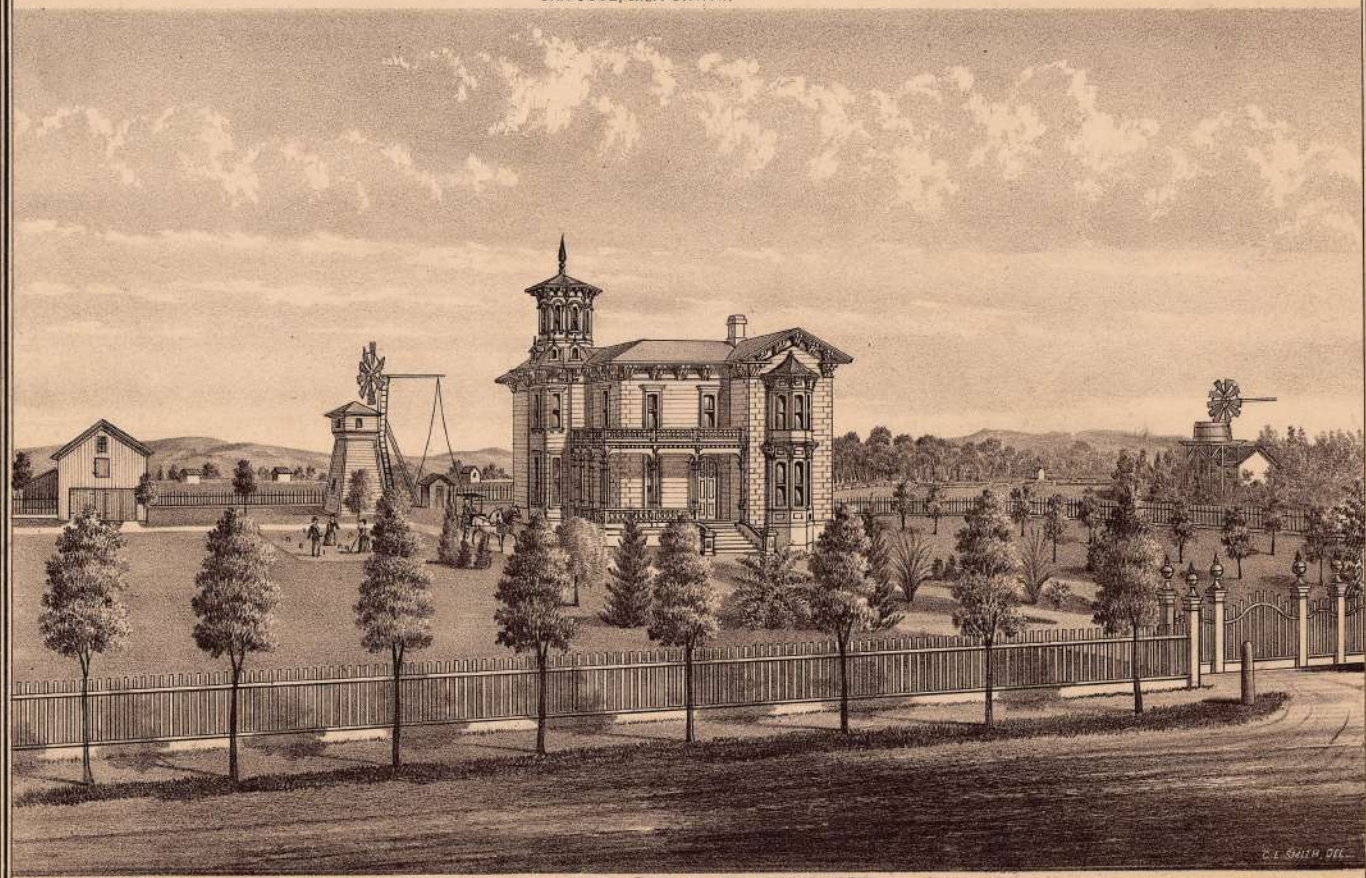


G. L. SMITH, DEL.

RES. OF THOS. FALLON, ESQ.
COR. SAN PEDRO & SAN AUGUSTINE STS., SAN JOSE.

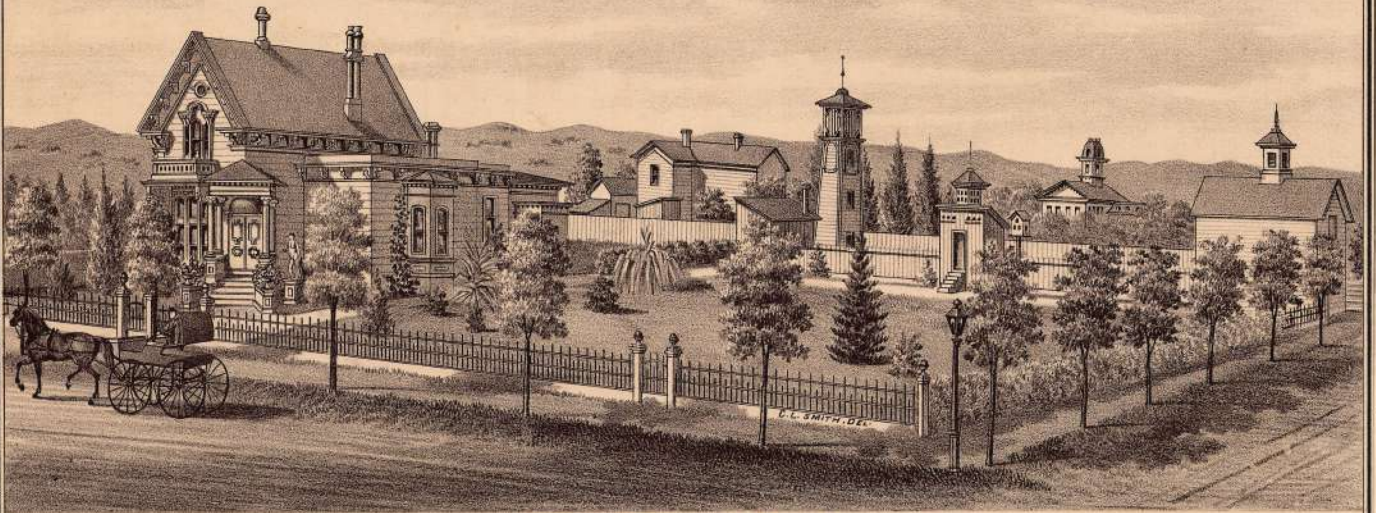


RES. OF C. X. HOBBS,
SAN JOSE, CALIFORNIA.

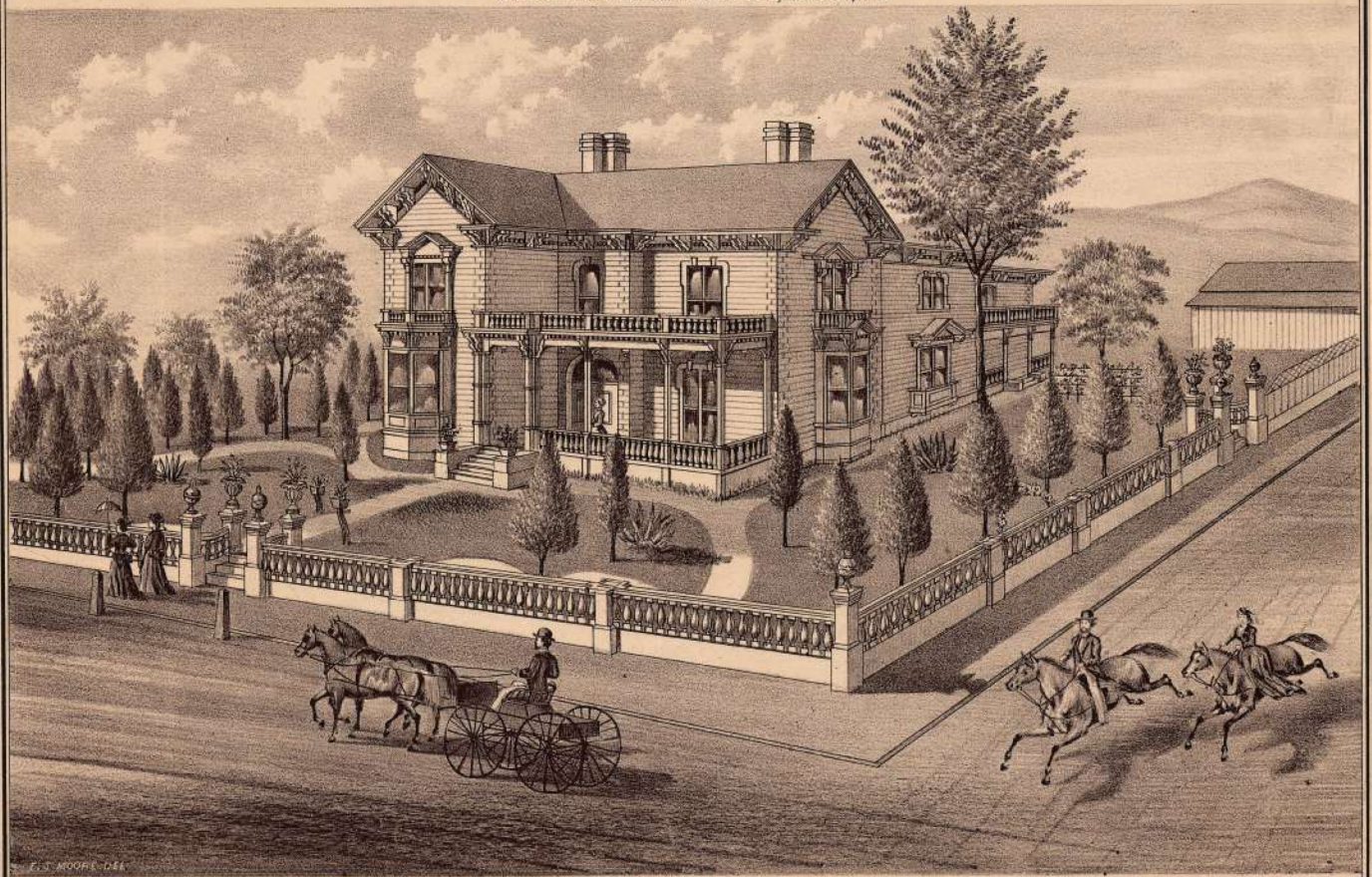


RES. OF E. L. BRADLEY, ESQ.
SAN JOSE, CALIFORNIA.

C. E. SMITH, DEL.



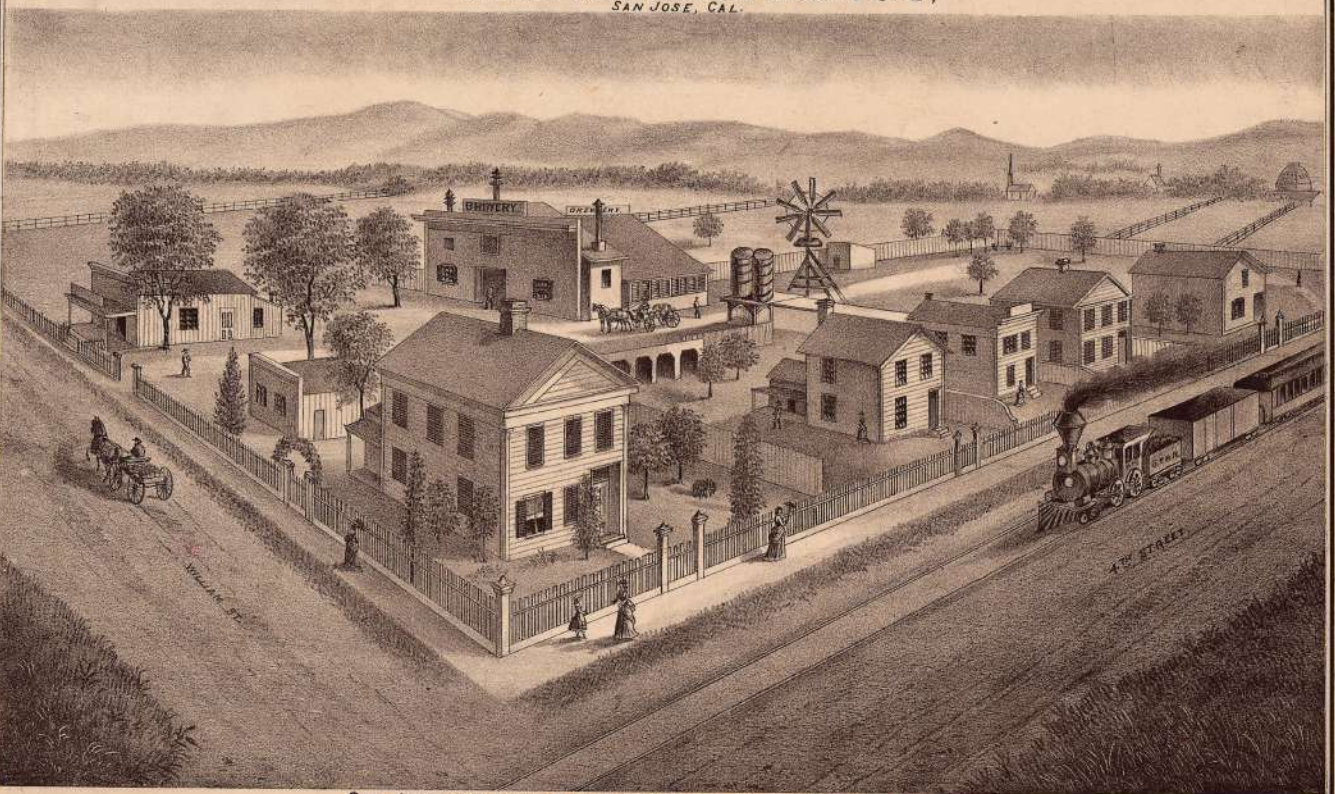
RES. OF PROF. J. H. L. TUCK,
COR. SAN FERNANDO & ELEVENTH STS., SAN JOSE, CAL.



RES. OF WM. H. HALL,
COR. FIRST & ST. JAMES STS., SAN JOSE, CAL.



SPRING'S GREAT AMERICAN CHEAP STORE,
SAN JOSE, CAL.

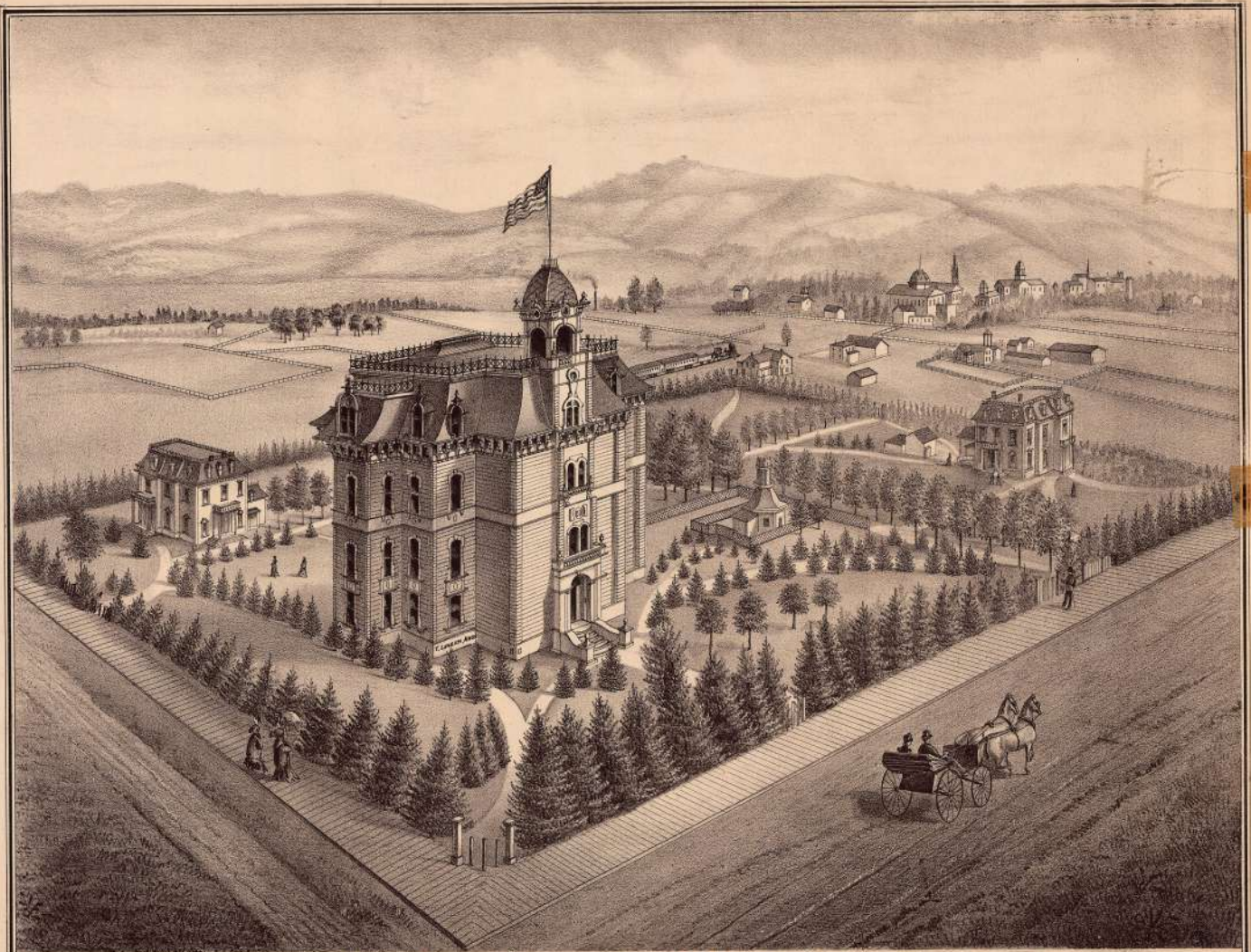


SAN JOSE BREWERY & RESIDENCE OF PH. DOERR, COR. 4th & WILLIAMS STS.,
SAN JOSE, CAL.



SANTA CLARA COLLEGE.

SANTA CL. WA. CAL.



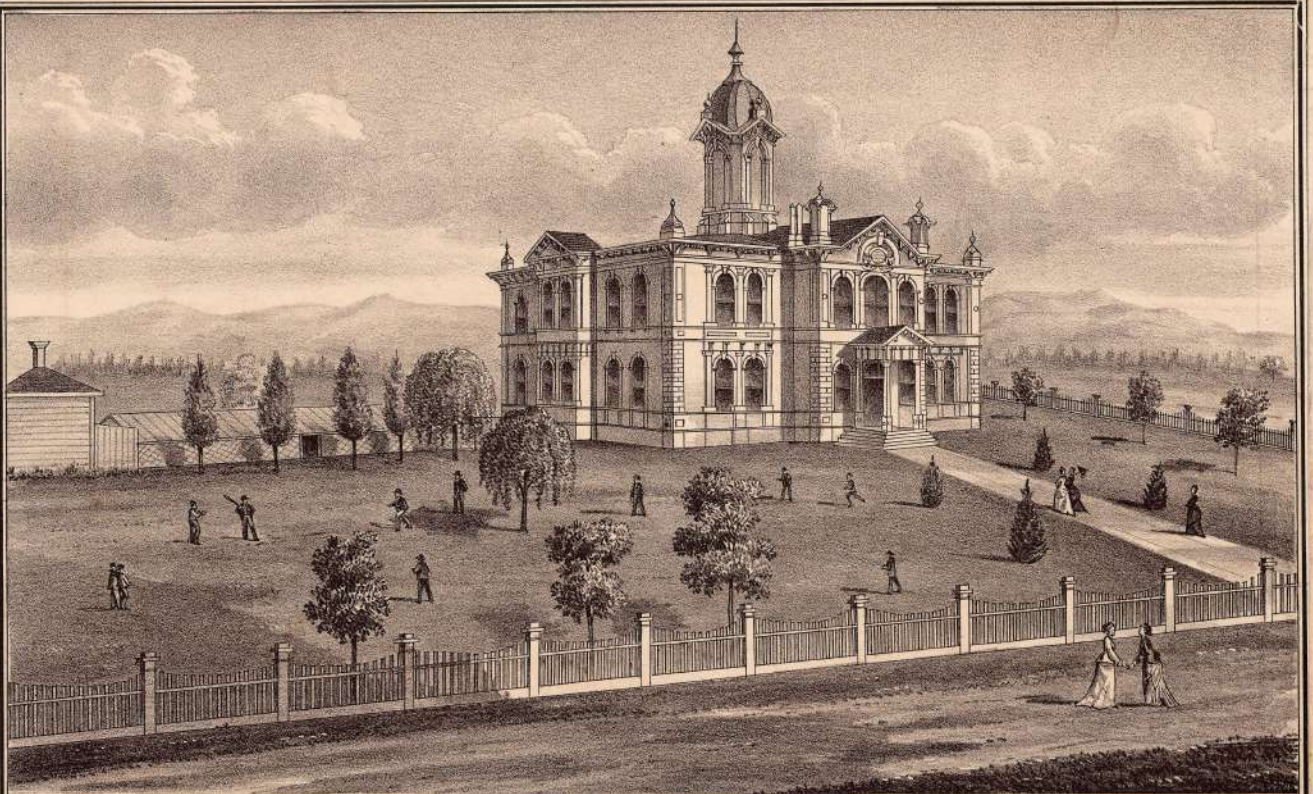
(GENTS HALL.) UNIVERSITY OF THE PACIFIC, BETWEEN SAN JOSE AND SANTA CLARA, CALIFORNIA. FOUNDED 1854. (LADIES HALL.)



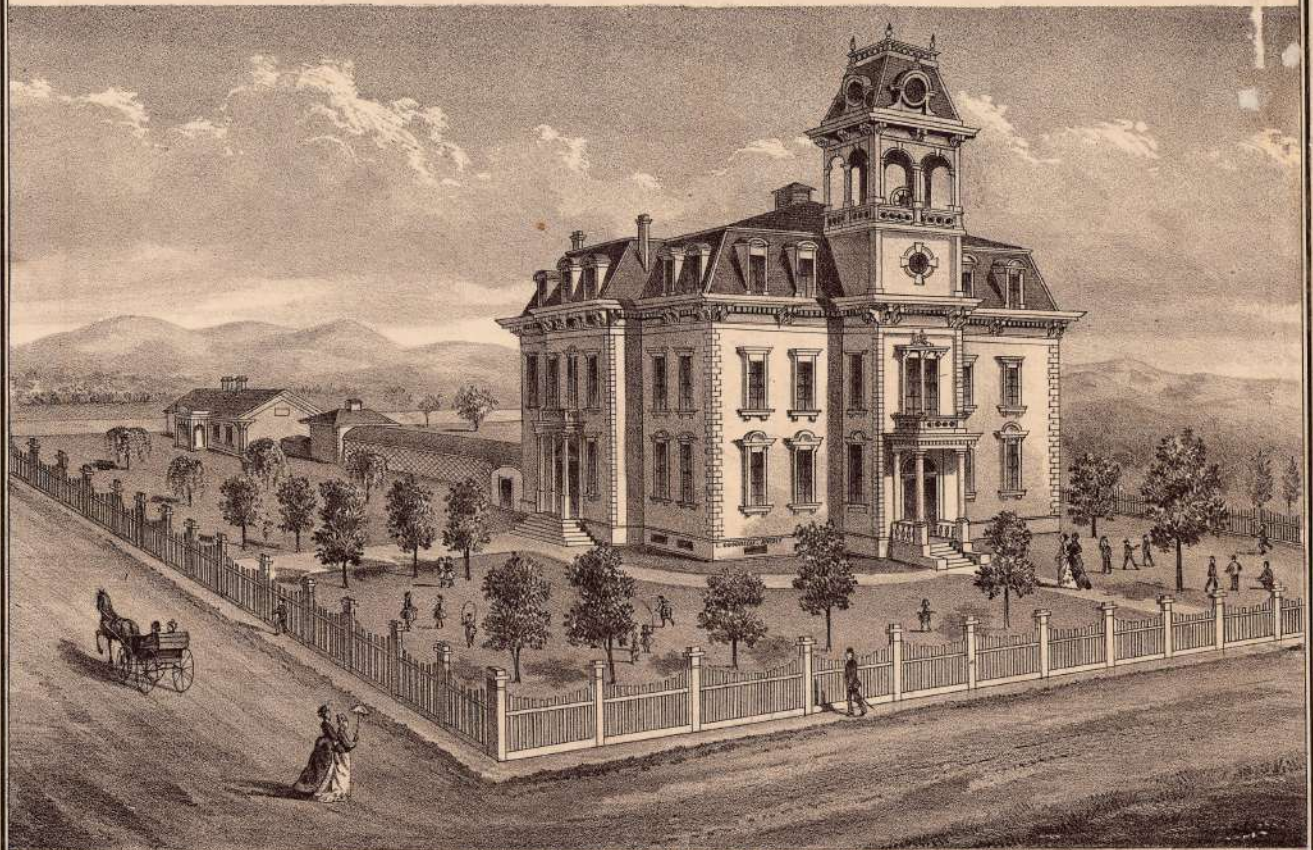
RES. OF J. R. ARCÜELLO.
SANTA CLARA, CAL.



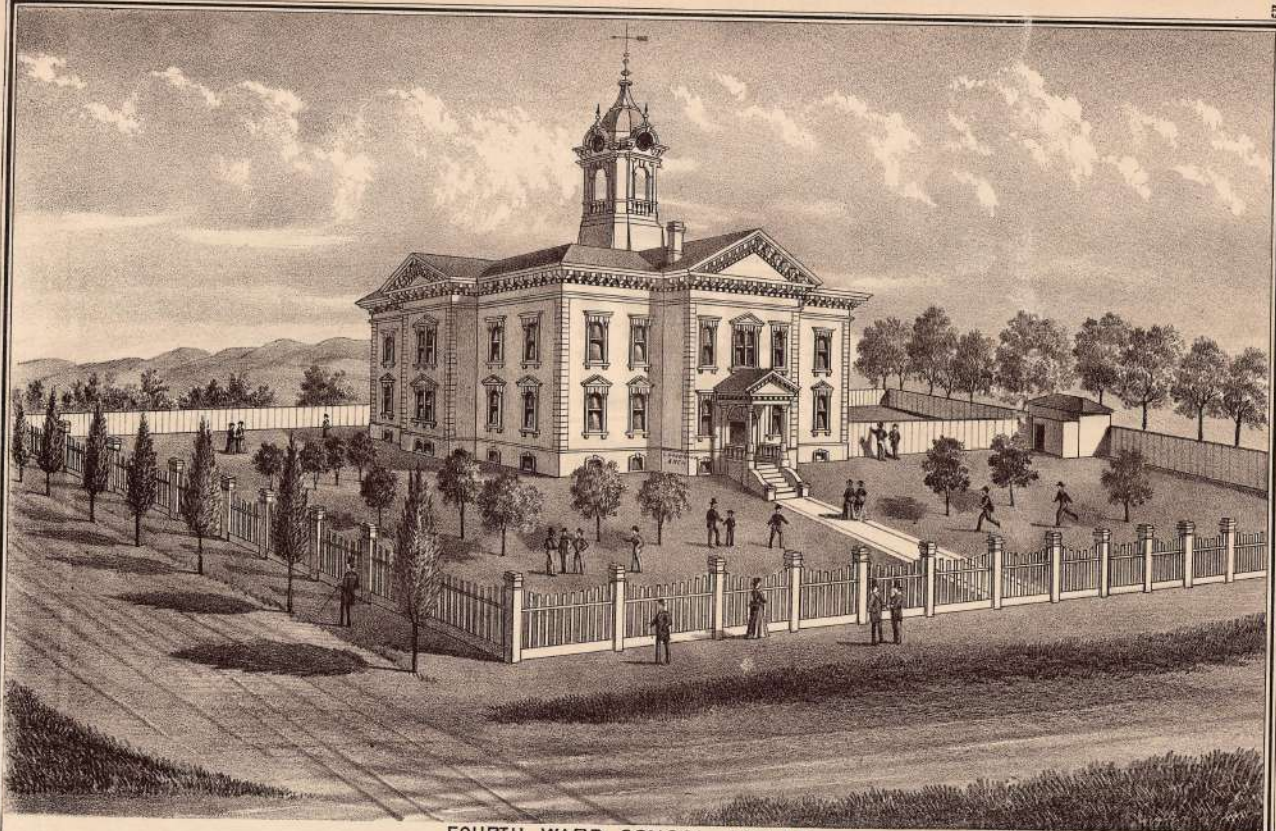
COLLEGE OF NOTRE DAME,
SAN JOSE CAL.



REED STREET SCHOOL HOUSE,
THIRD WARD, SAN JOSE, CALIFORNIA.



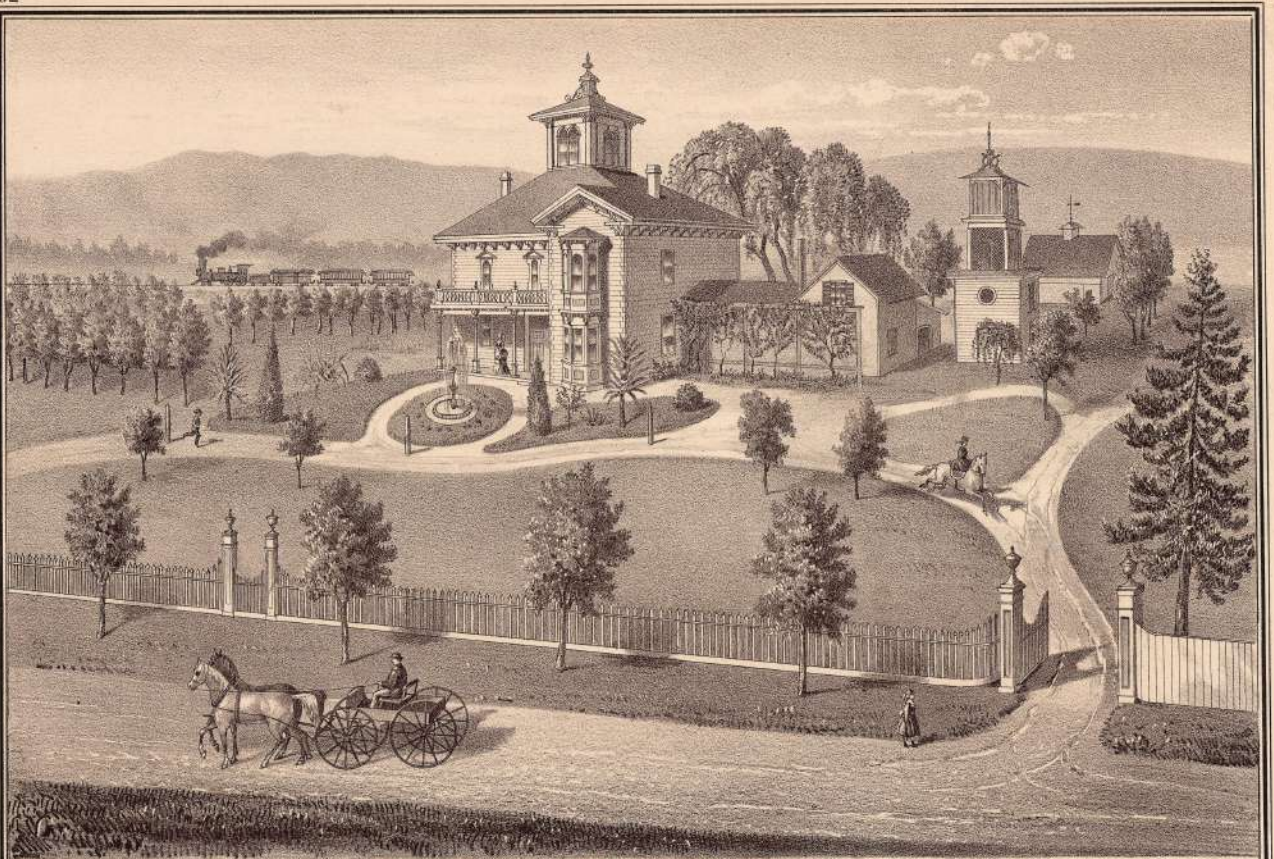
SANTA CLARA STREET SCHOOL HOUSE,
SECOND WARD, SAN JOSE, CALIFORNIA.



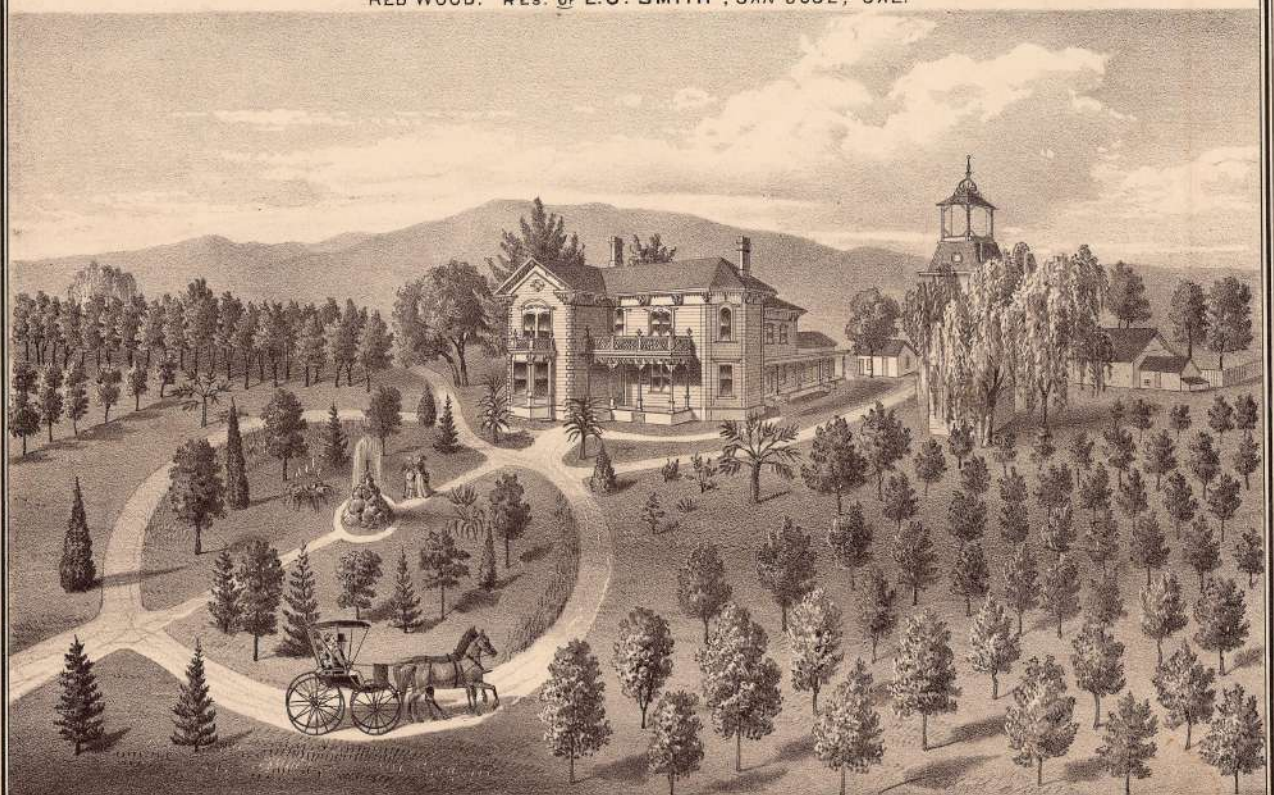
FOURTH WARD SCHOOL HOUSE,
SAN JOSE, CAL.



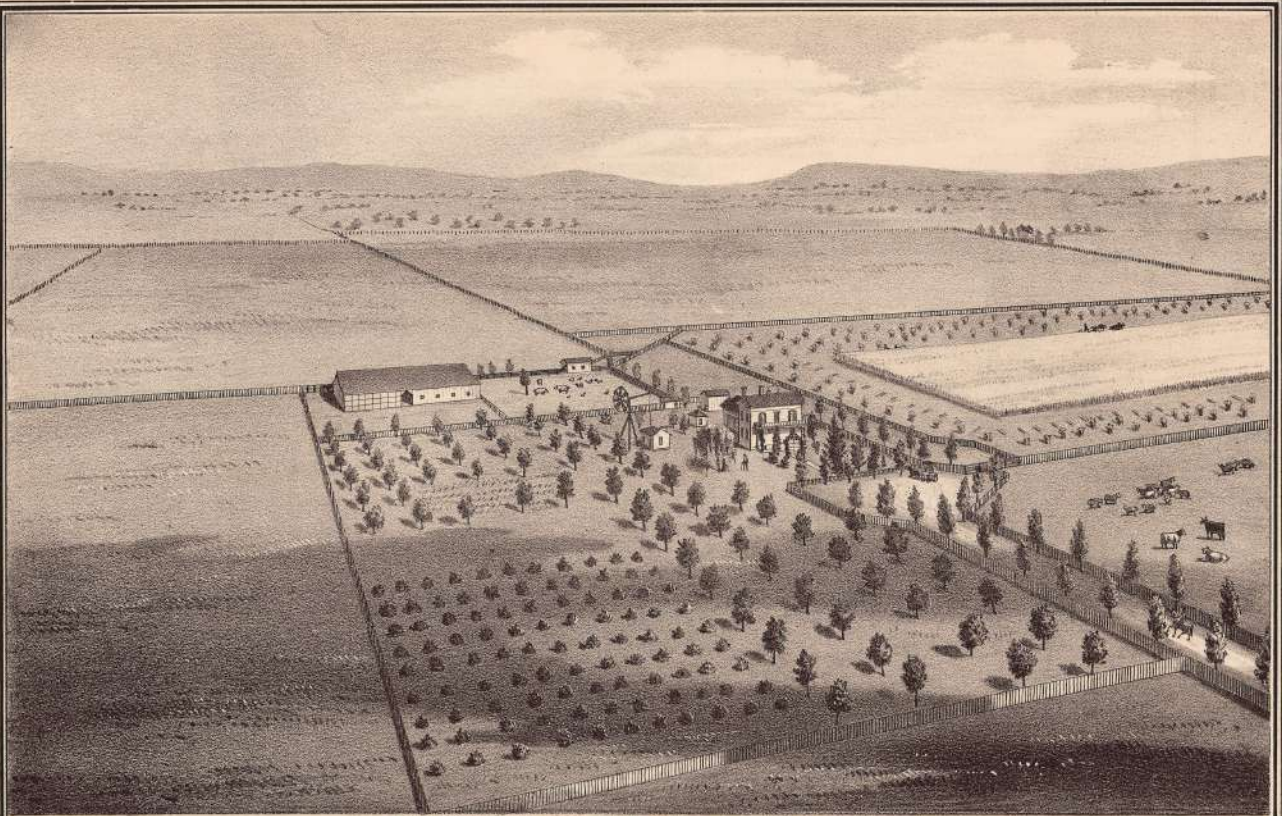
FIRST WARD SCHOOL HOUSE,
SAN JOSE, CAL.



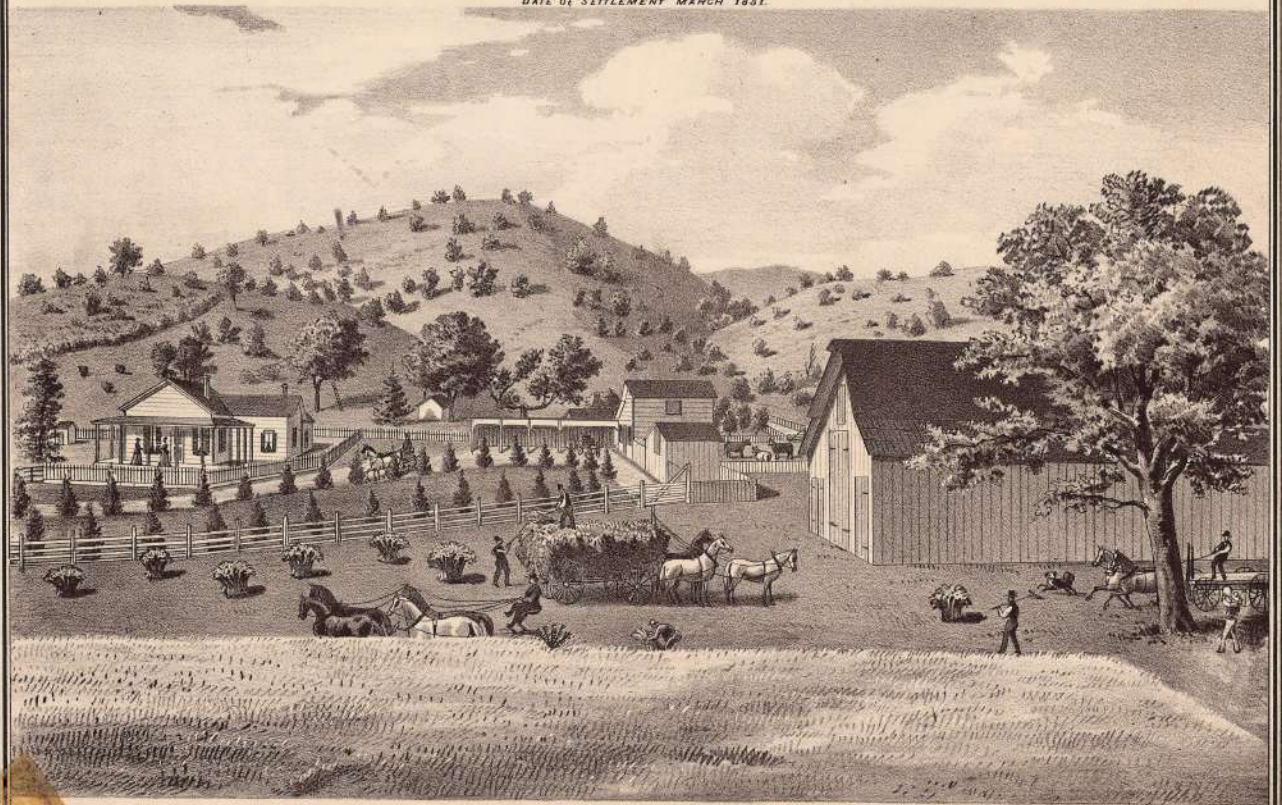
RED WOOD. RES. OF E.O. SMITH, SAN JOSE, CAL.



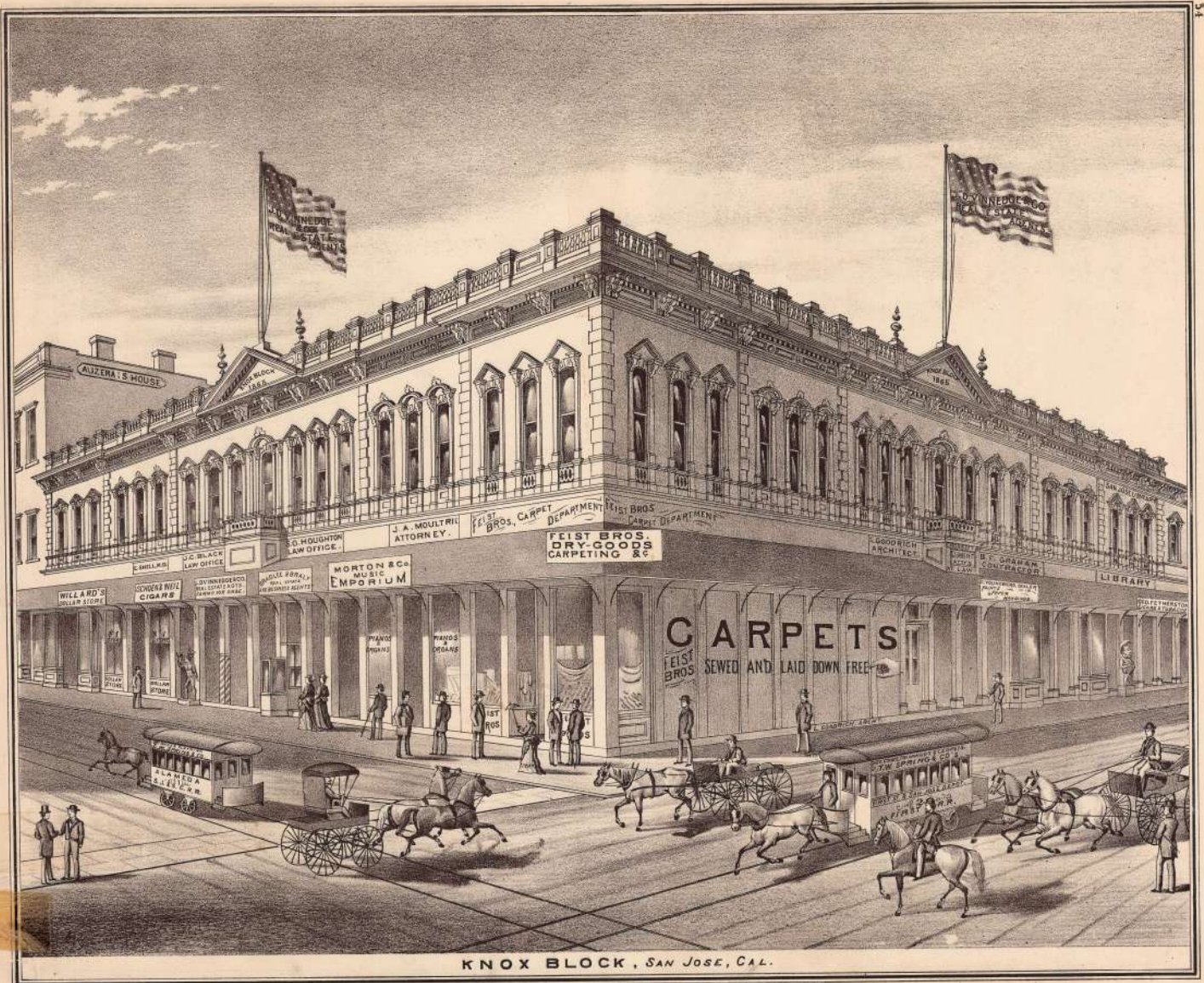
RES. OF J. L. EVANS, SAN JOSE, CALIFORNIA.



RES. OF BENJ. CAMPBELL, ESQ., 165 ACRES ON SEC'S 26 & 35, SANTA CLARA TP.,
 SANTA CLARA CO., CALIFORNIA.
 DATE OF SETTLEMENT MARCH 1851.



RES. OF L. F. PARKER, ESQ.,
 SPRING RANCH, ALMADEN TP., SANTA CLARA CO., CAL.



KNOX BLOCK, SAN JOSE, CAL.

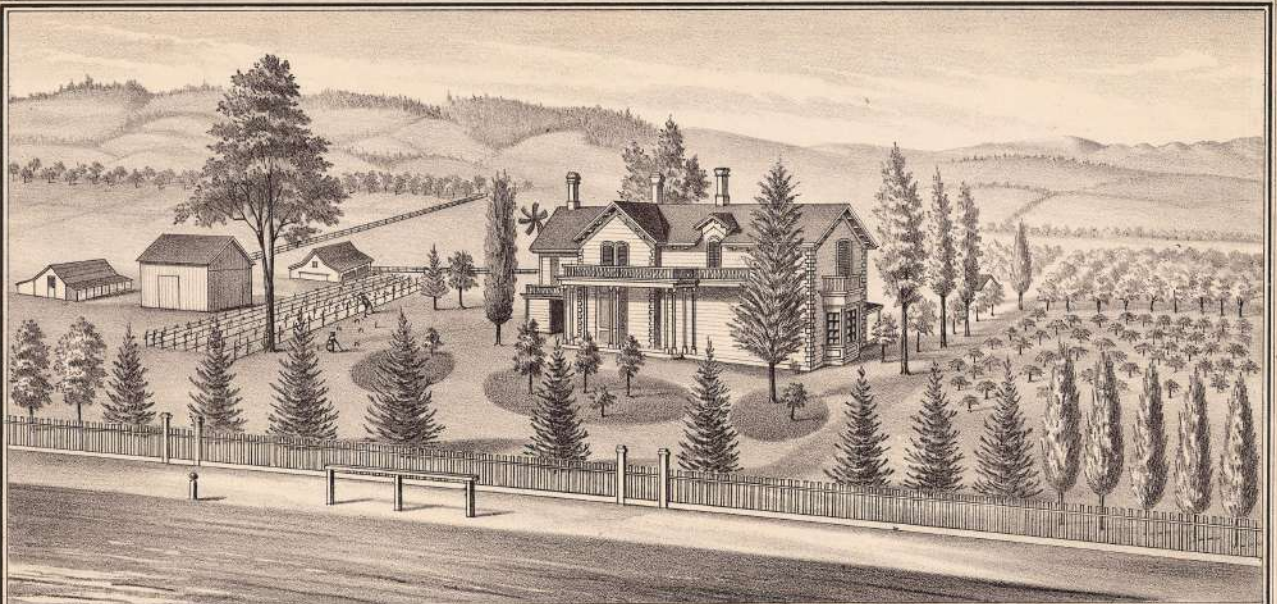


L. GODDICH, ARCHITECT.

RES. of Mr. & Mrs. C.H. MADDOX
FIRST ST. SAN JOSE, CAL.



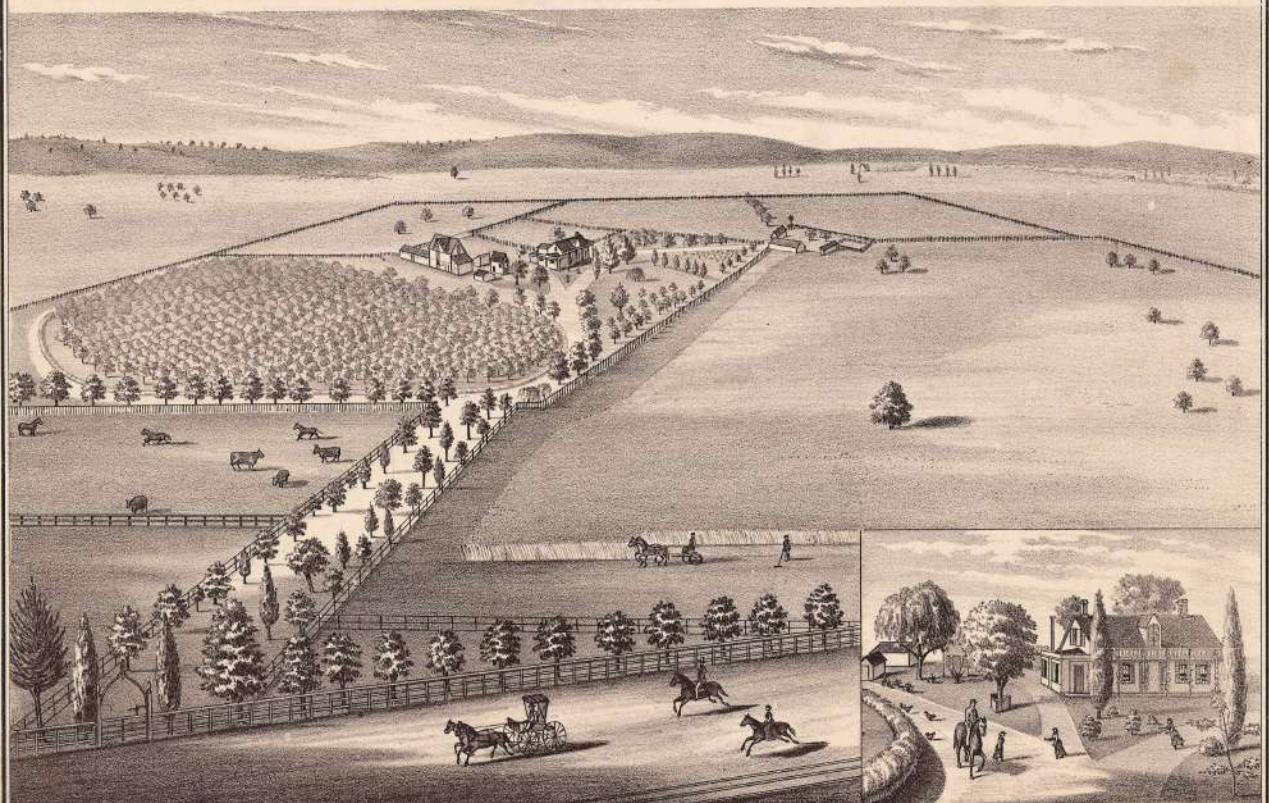
RES. of MRS. S.L. KNOX, COR. OF SECOND & SAN ANTONIO STS., SAN JOSE, CAL.



ORCHARD FARM, GOULD ST. COR. OF LEXINGTON ST. SANTA CLARA, CAL.

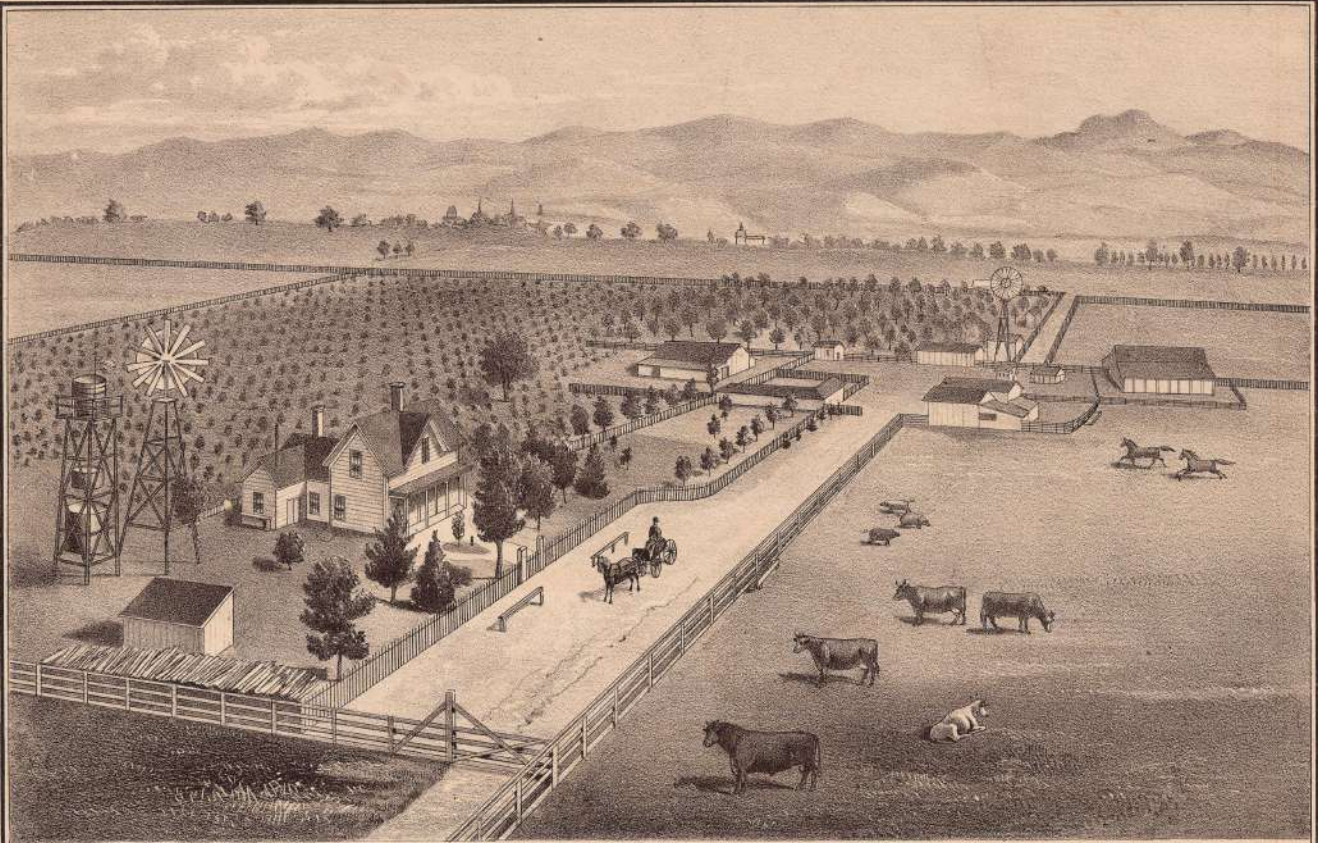
RES. OF B. F. WATKINS, BREEDER OF THOROUGH BRED SPANISH MERINO SHEEP.

MRS. L. J. WATKINS, THOROUGH BRED POULTRY.

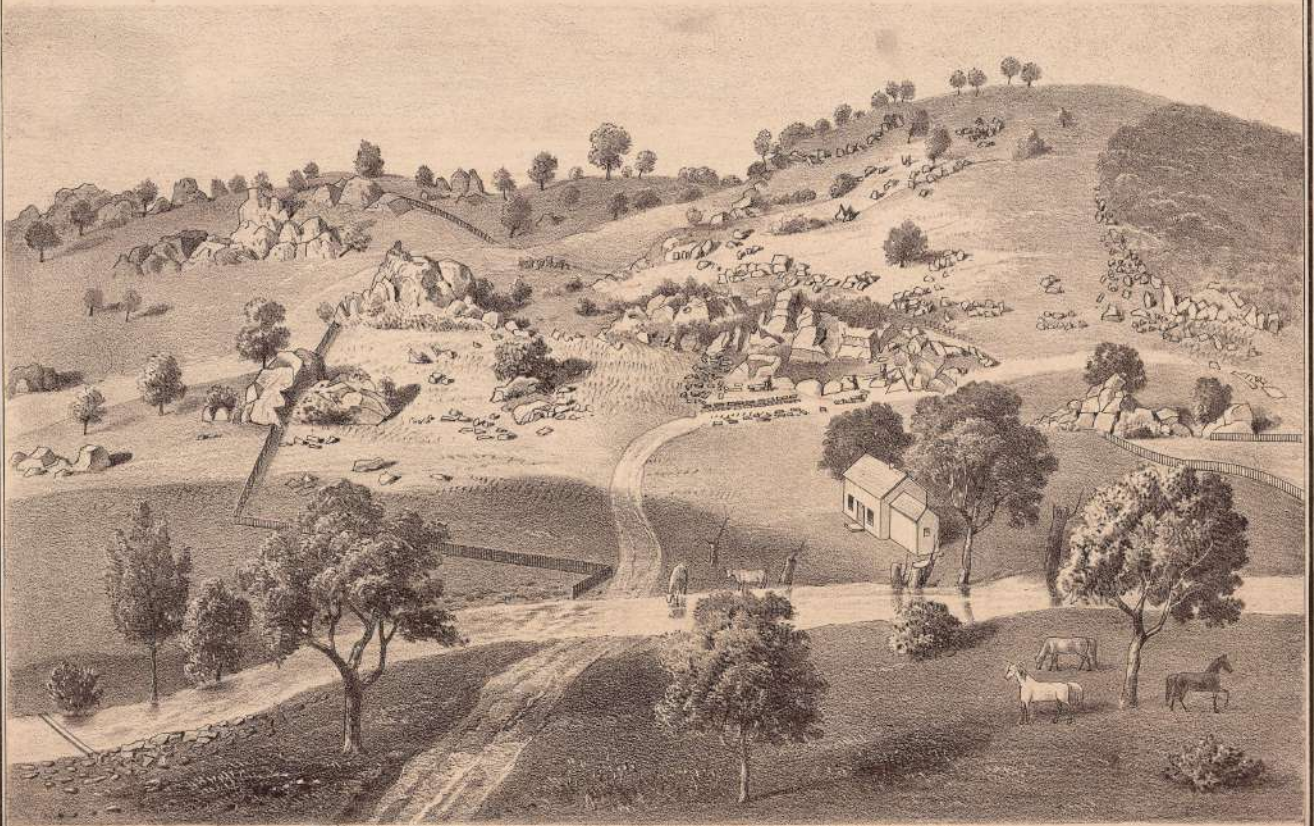


EDGAR WILLIAMS, DEL.

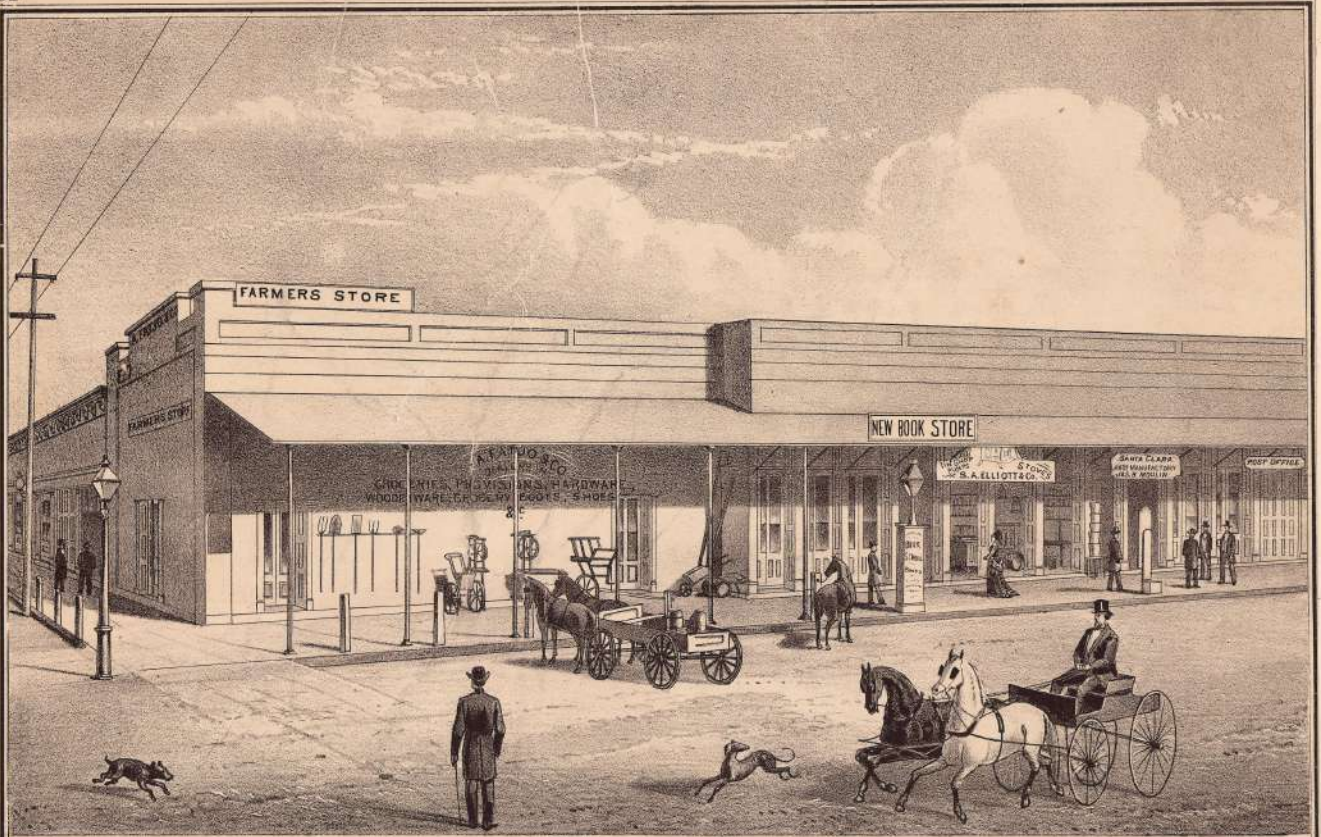
SOMERVILLE LODGE, FARM & RES. OF DR. L. H. BASCOM, SANTA CLARA TP., SANTA CLARA TP., CAL.



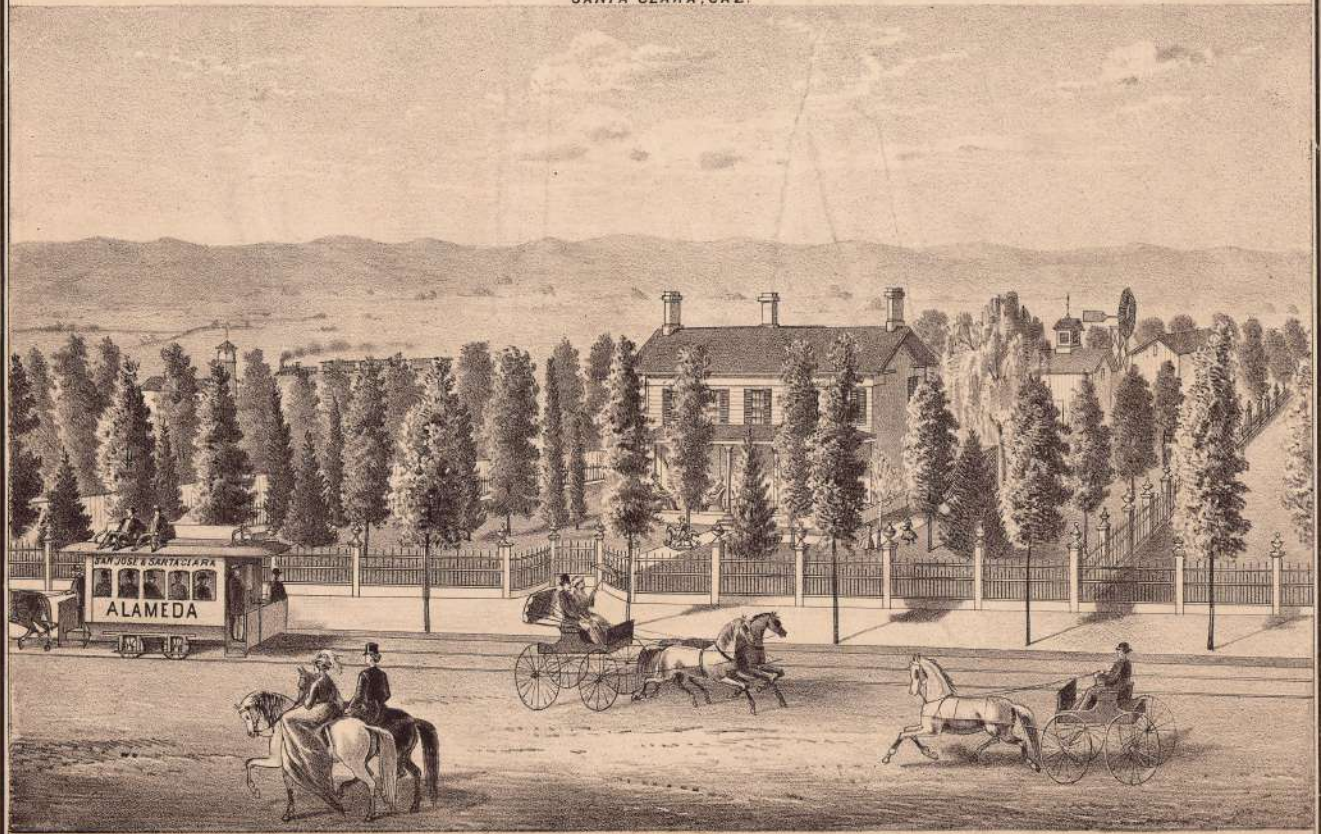
RANCH OF D. & T. WILLIAMS OF WILLIAMS BROS., SAN JOSE, CAL.



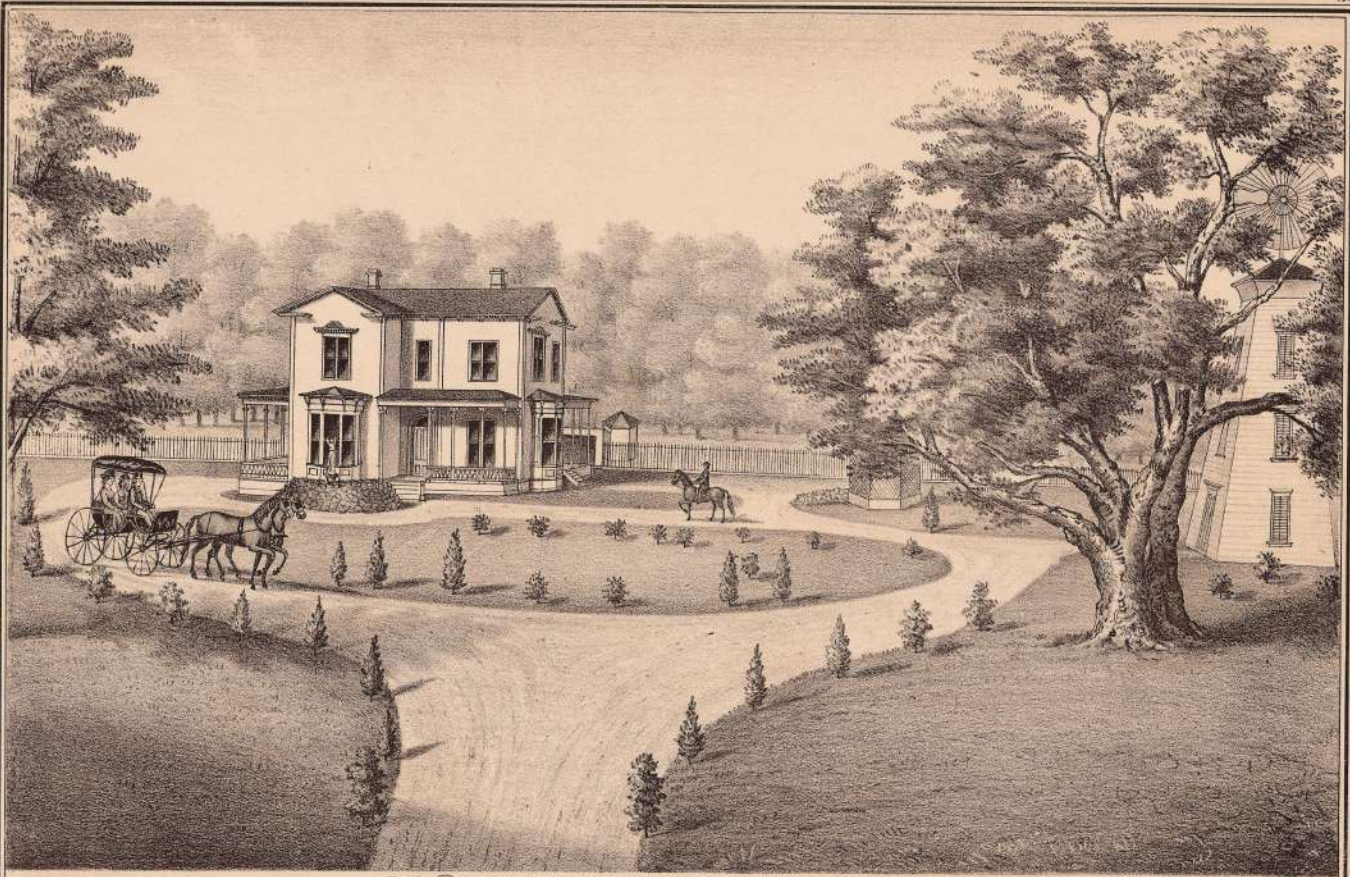
GOODRICH'S FREE STONE QUARRY, ON ALMADEN ROAD, 8 MILES SOUTH OF SAN JOSE, CAL.



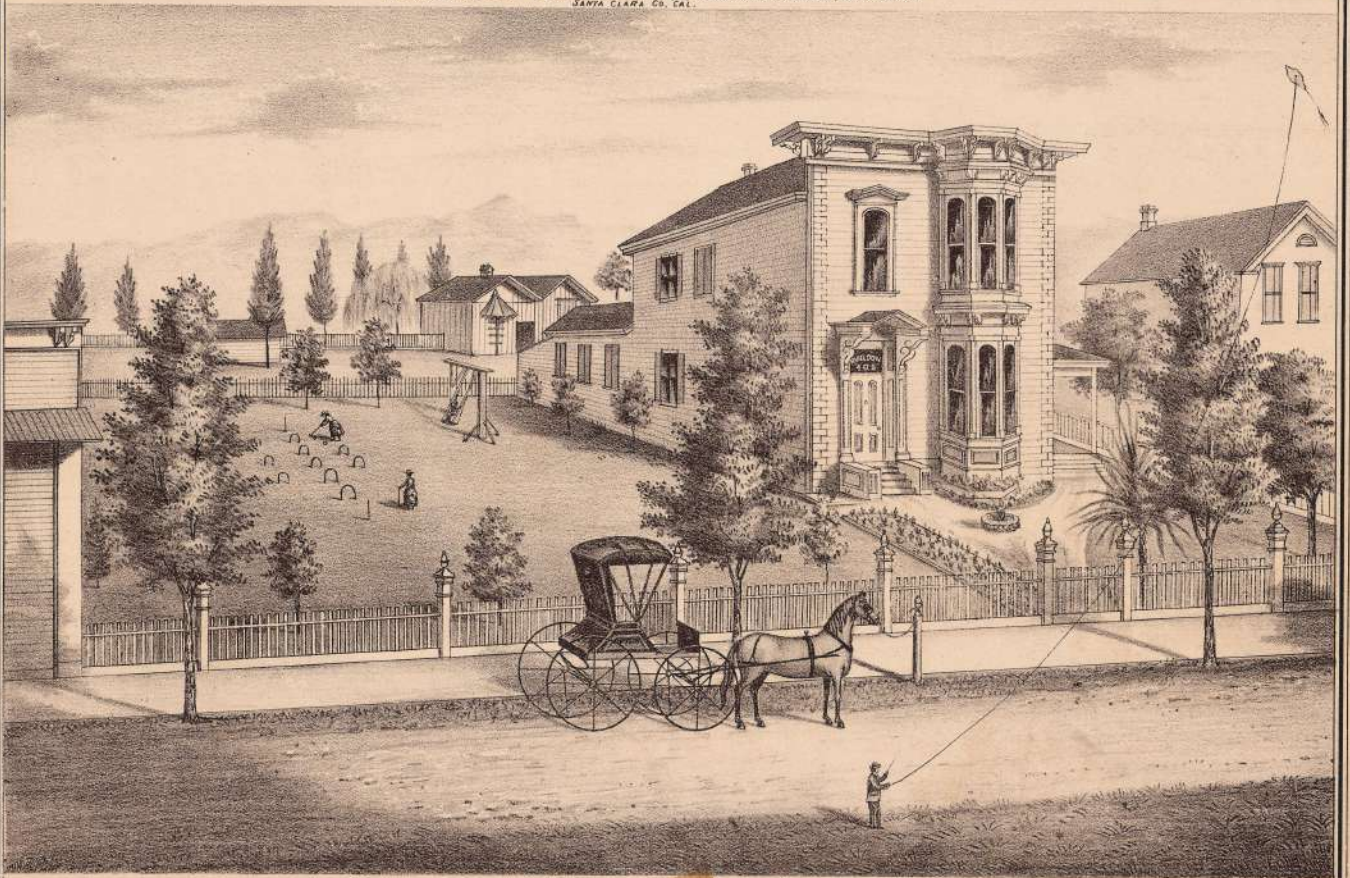
J. R. ARQUE S' BLOCK,
SANTA CLARA, CAL.



RES. OF THE LATE HON. C. P. HESTER, SAN JOSE, CALIFORNIA.



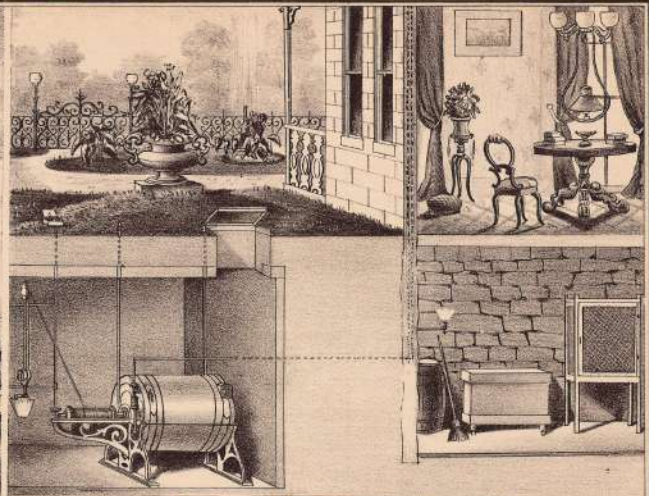
RES. OF JOHN TENNANT, ESQ., EDENVALE STATION, S. P. R. R.
SANTA CLARA CO., CAL.



RES. OF W. H. WELDON, REAL ESTATE AGENT, SAN JOSE, CAL., OFFICE 605 CLAY ST., SAN FRANCISCO.



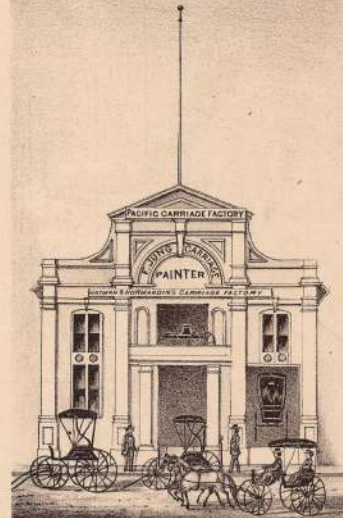
RES. OF PEDRO DE SAISSET, ESQ., No 478 GUADALUPE ST., SAN JOSE, CAL.



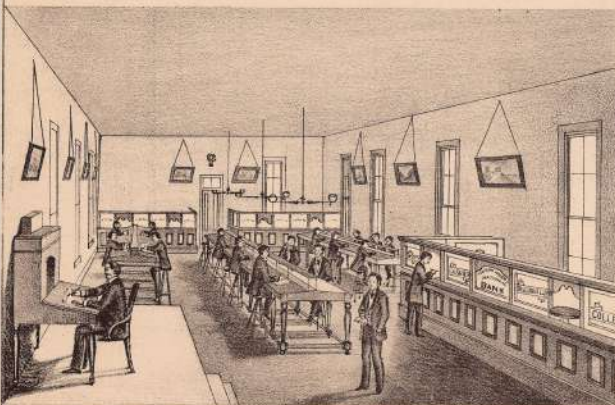
KEYSTONE SAFETY GAS MACHINE,
 FURNISHING COUNTRY RESIDENCES, HOTELS, FACTORIES &c WITH GAS AT LESS THAN CITY PRICES.
J.N.HOLDEN, PLUMBER & GAS FITTER, 404 FIRST STREET,
 SAN JOSE, CAL.
 SOLE AGENT FOR PACIFIC COAST.



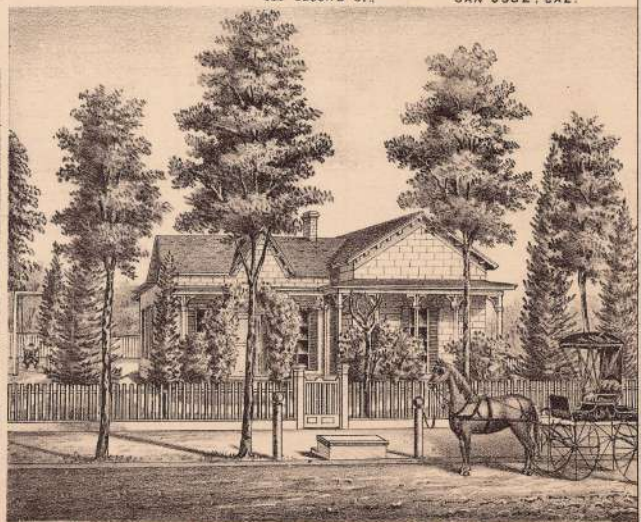
OFFICE & RES. OF C.W. BREYFOGLE, M.D.
 COR. THIRD & ST. JAMES STS, SAN JOSE, CAL.



HATMAN & NORMANDIN'S CARRIAGE FACTORY,
 411 SECOND ST., SAN JOSE, CAL.



INTERIOR VIEW OF VINSONHALER'S BUSINESS COLLEGE,
 SAN JOSE, CAL.



RES. OF JAMES A. CLAYTON, ESQ., NORTH MARKET ST., SAN JOSE, CAL.