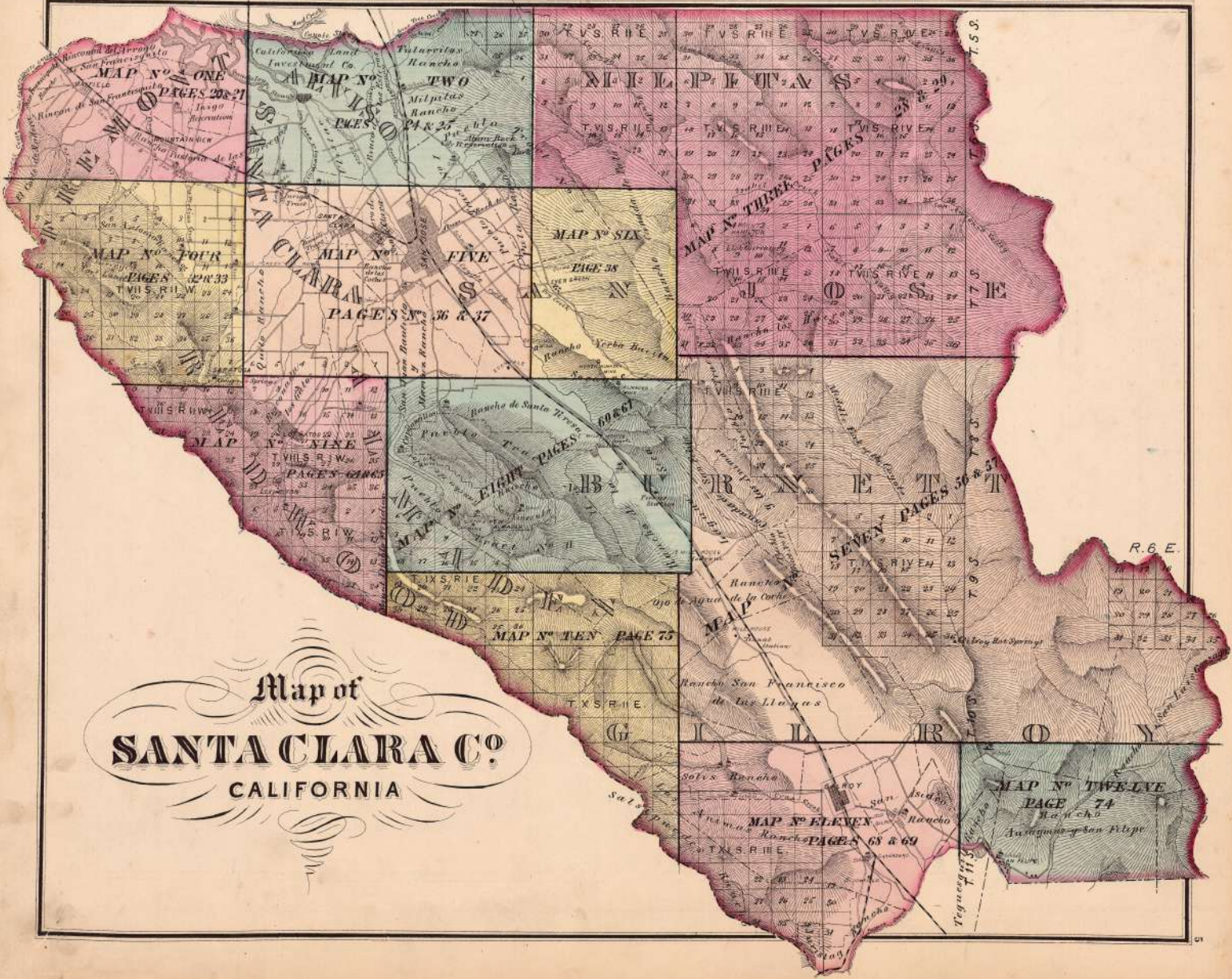


R.3 W. R.2 W. R.1 W. R.1 E. R.2 E. R.3 E. R.4 E. R.5 E.



Map of  
**SANTA CLARA CO.**  
CALIFORNIA

MAP NO. TWELVE  
PAGE 74  
Rancho  
Antiguos y San Felipe

MAP NO. ELEVEN  
PAGES 68 & 69  
Rancho

MAP NO. TEN PAGE 73

MAP NO. EIGHT PAGES 60 & 61

MAP NO. NINE  
PAGES 62 & 63

MAP NO. SIX  
PAGE 58

MAP NO. FIVE  
PAGES 36 & 37

MAP NO. THREE  
PAGES

MAP NO. FOUR  
PAGES 29 & 33

MAP NO. TWO  
PAGES 24 & 25

MAP NO. ONE  
PAGES 20 & 21



MAP NUMBER ONE

PLAT OF ALVISO

(Part of Sherman Day's Cont of Depts of Art)



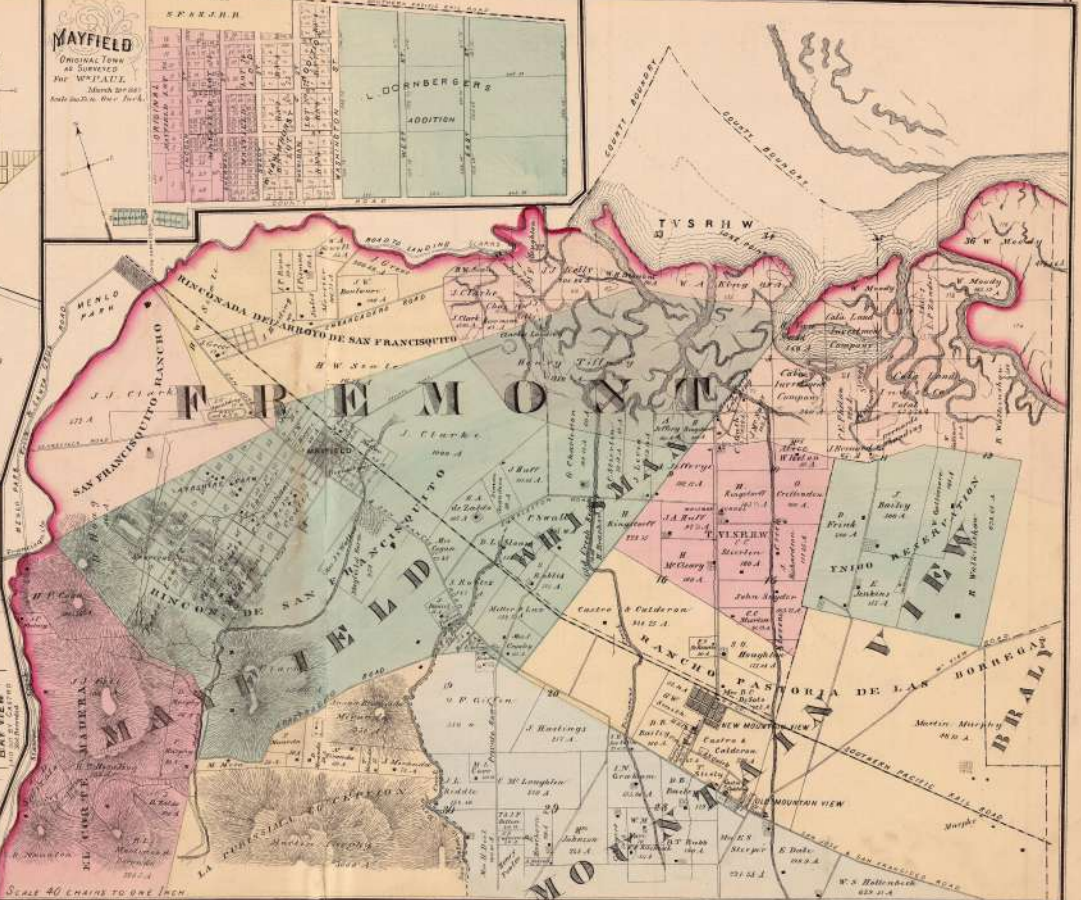
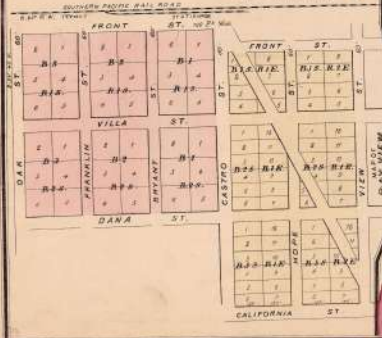
MAYFIELD

ORIGINAL TOWN as SURVEYED for W.P. LITTLE March 2nd 1854 Scale 1/2 in. to one block.



MAP OF VILLA LANDS OF MOUNTAIN VIEW

Recorded March 1893



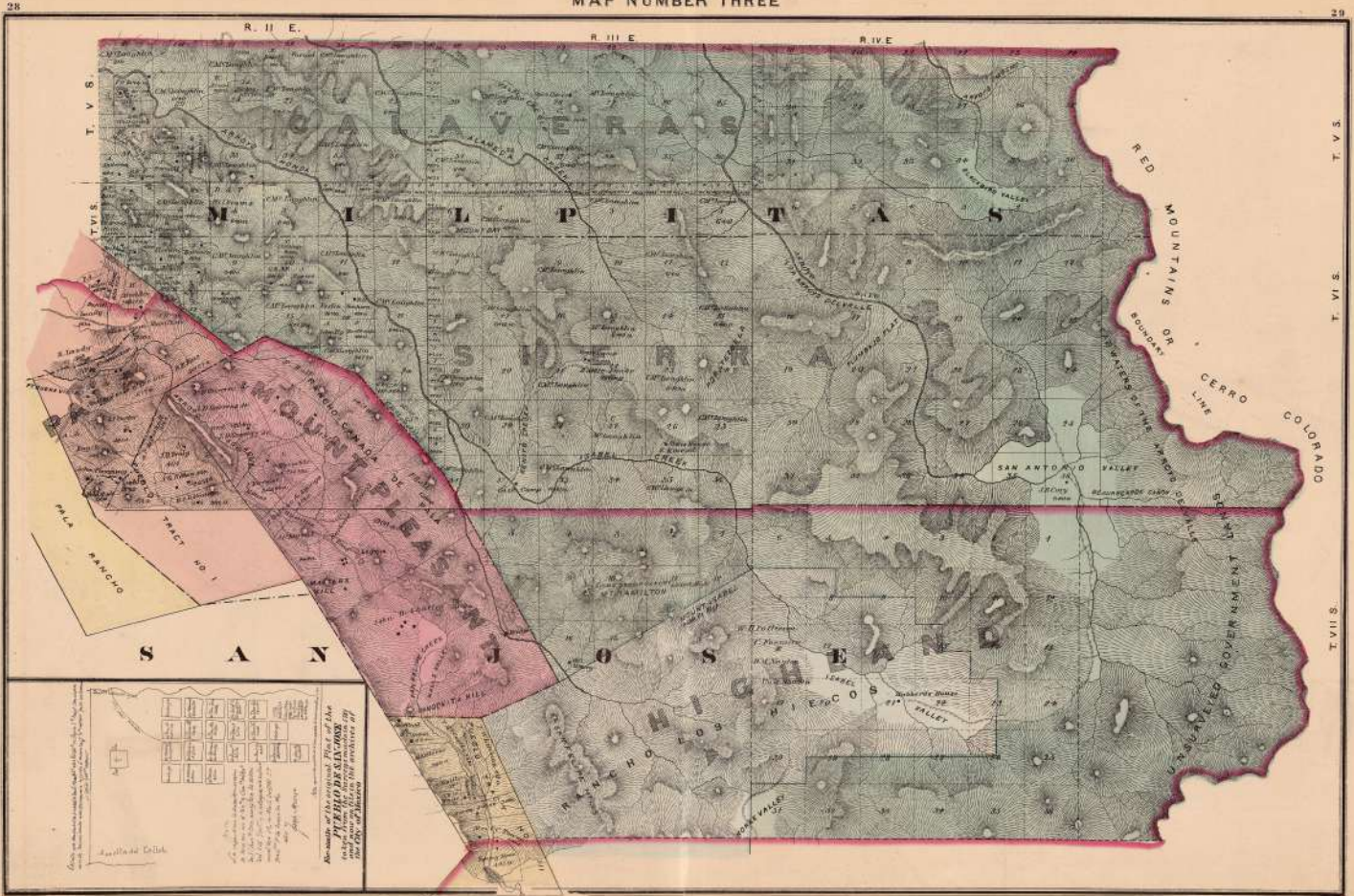
SCALE 40 CHAINS TO ONE INCH







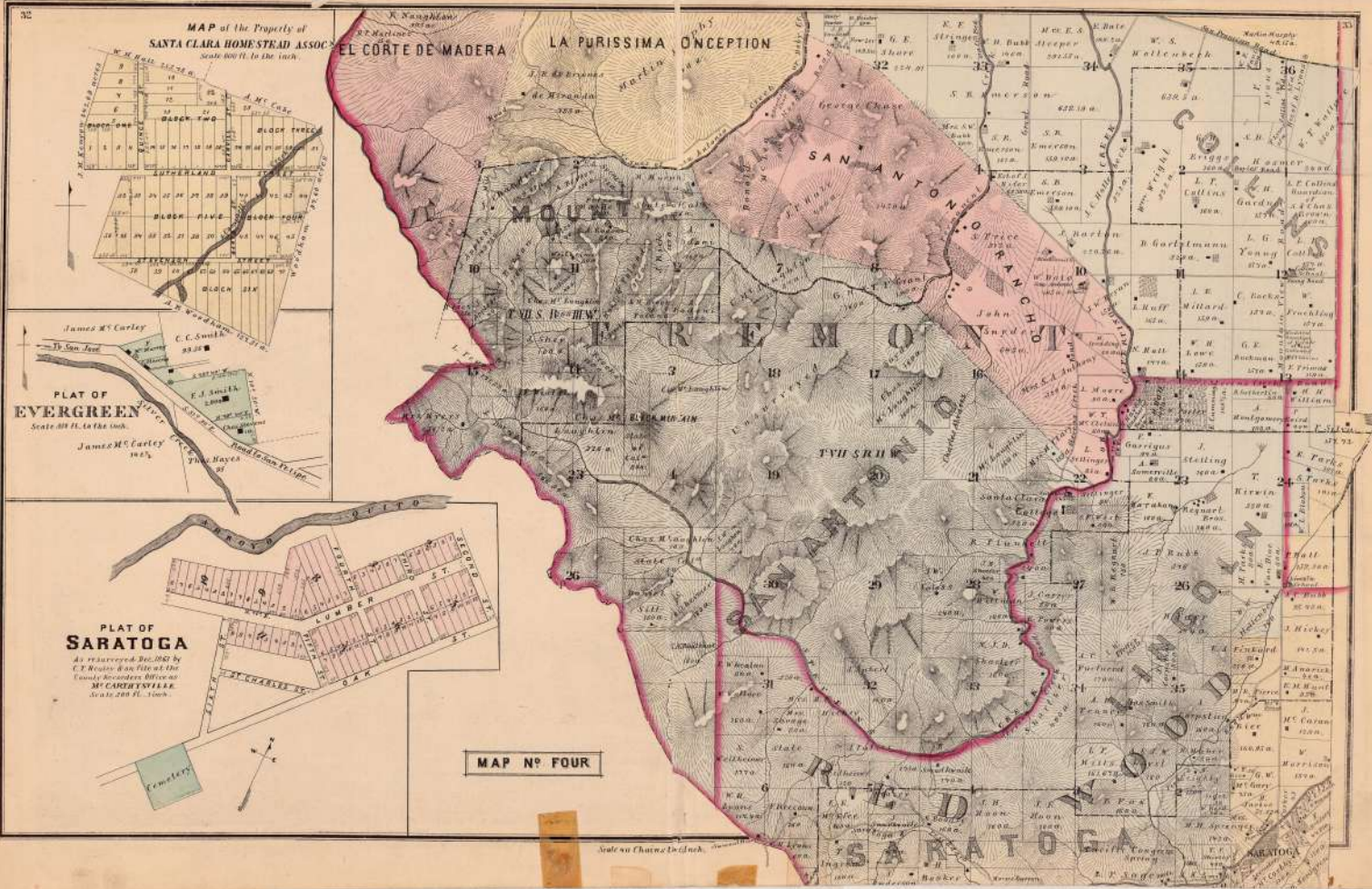
MAP NUMBER THREE



Scale	1:50,000	1:62,500	1:75,000	1:100,000	1:125,000	1:150,000	1:200,000	1:250,000	1:300,000	1:400,000	1:500,000
1 inch	1250 feet	1562 feet	1875 feet	2500 feet	3125 feet	3750 feet	5000 feet	6250 feet	7500 feet	10000 feet	12500 feet
1 centimeter	1250 meters	1562 meters	1875 meters	2500 meters	3125 meters	3750 meters	5000 meters	6250 meters	7500 meters	10000 meters	12500 meters

The map is a reproduction of the original. The original map was prepared by the U.S. Geological Survey, and the reproduction was made by the U.S. Geological Survey, under the direction of the Chief Geographer, Washington, D.C. The map is published by the U.S. Geological Survey, and the reproduction is published by the U.S. Geological Survey, under the direction of the Chief Geographer, Washington, D.C.





MAP of the Property of  
SANTA CLARA HOME STRADD ASSOC.  
Scale 800 ft. to the inch.

PLAT OF  
EVERGREEN  
Scale 800 ft. to the inch.

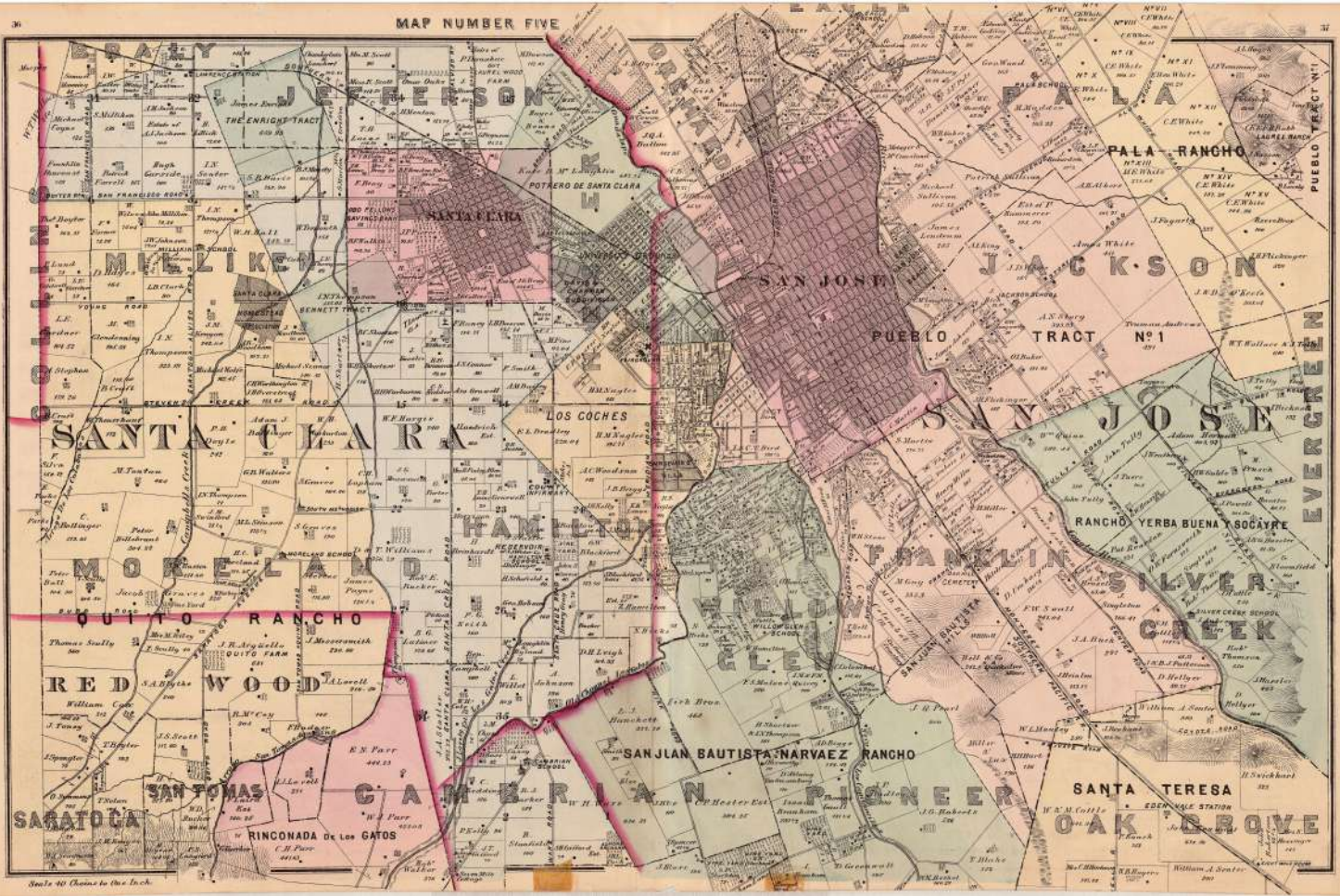
PLAT OF  
SARATOGA  
Scale 800 ft. to the inch.

MAP N° FOUR

Scale as Charted in Chain.



MAP NUMBER FIVE



Scale 40 Chains to the Inch



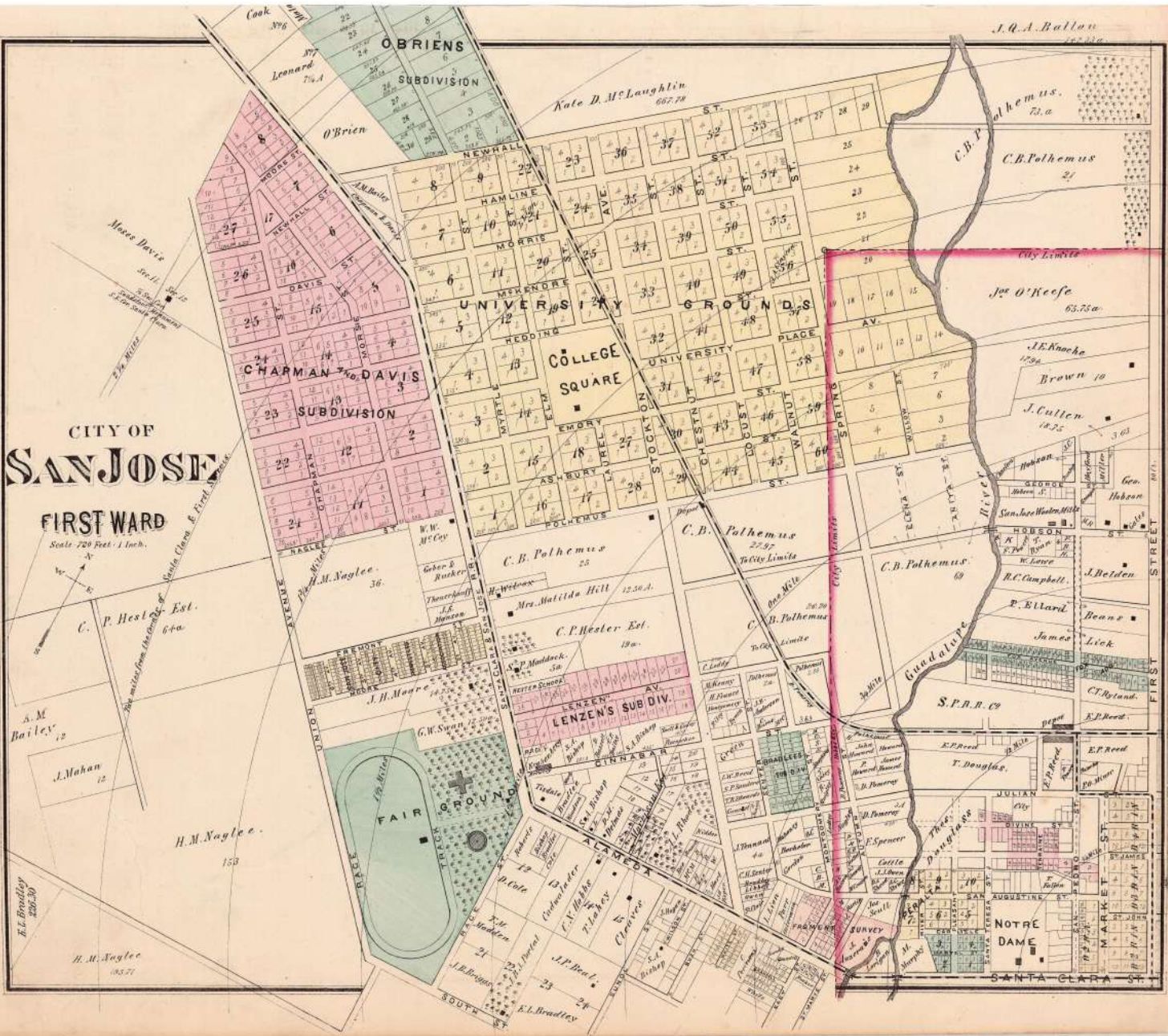




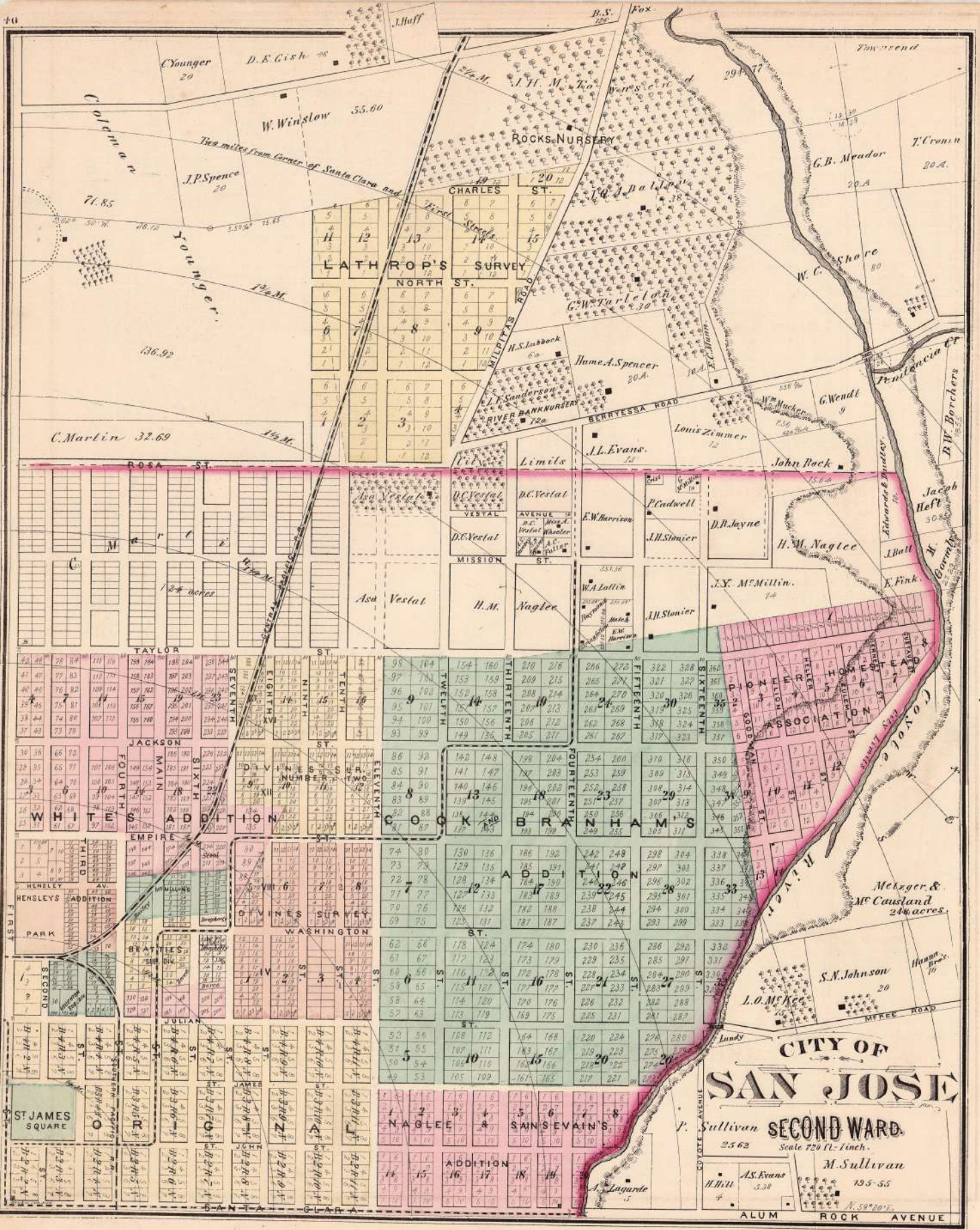
# CITY OF SAN JOSE

## FIRST WARD

Scale 720 Feet = 1 Inch.

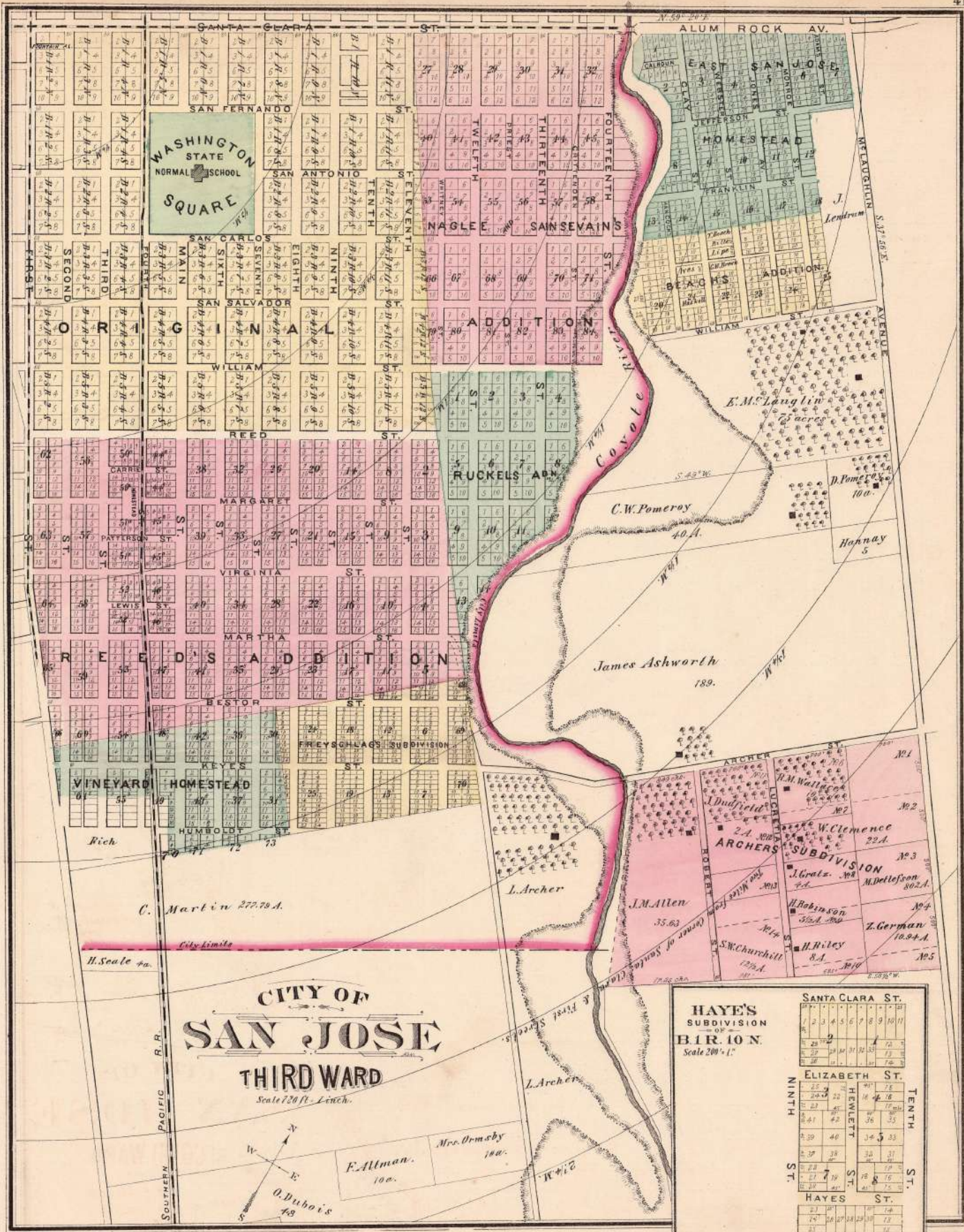






**CITY OF SAN JOSE**  
**SECOND WARD.**  
 Scale 720 Ft. = 1 inch.  
 P. Sullivan 2562  
 M. Sullivan 195-55  
 A.S. Evans 5.38  
 H. Hill 4  
 ALUM ROCK AVENUE





SANTA CLARA ST.										
1	2	3	4	5	6	7	8	9	10	11
12	13	14	15	16	17	18	19	20	21	22
23	24	25	26	27	28	29	30	31	32	33
34	35	36	37	38	39	40	41	42	43	44
45	46	47	48	49	50	51	52	53	54	55
56	57	58	59	60	61	62	63	64	65	66
67	68	69	70	71	72	73	74	75	76	77
78	79	80	81	82	83	84	85	86	87	88
89	90	91	92	93	94	95	96	97	98	99
100	101	102	103	104	105	106	107	108	109	110
SAN FERNANDO										

WASHINGTON STATE  
 NORMAL SCHOOL  
 SQUARE

RUCKEL'S ADD.

**CITY OF SAN JOSE**  
**THIRD WARD**  
 Scale 120 ft. = Inch.



E. Altman. 10a.  
 Mrs. Ormsby 10a.  
 O. DuBois 78

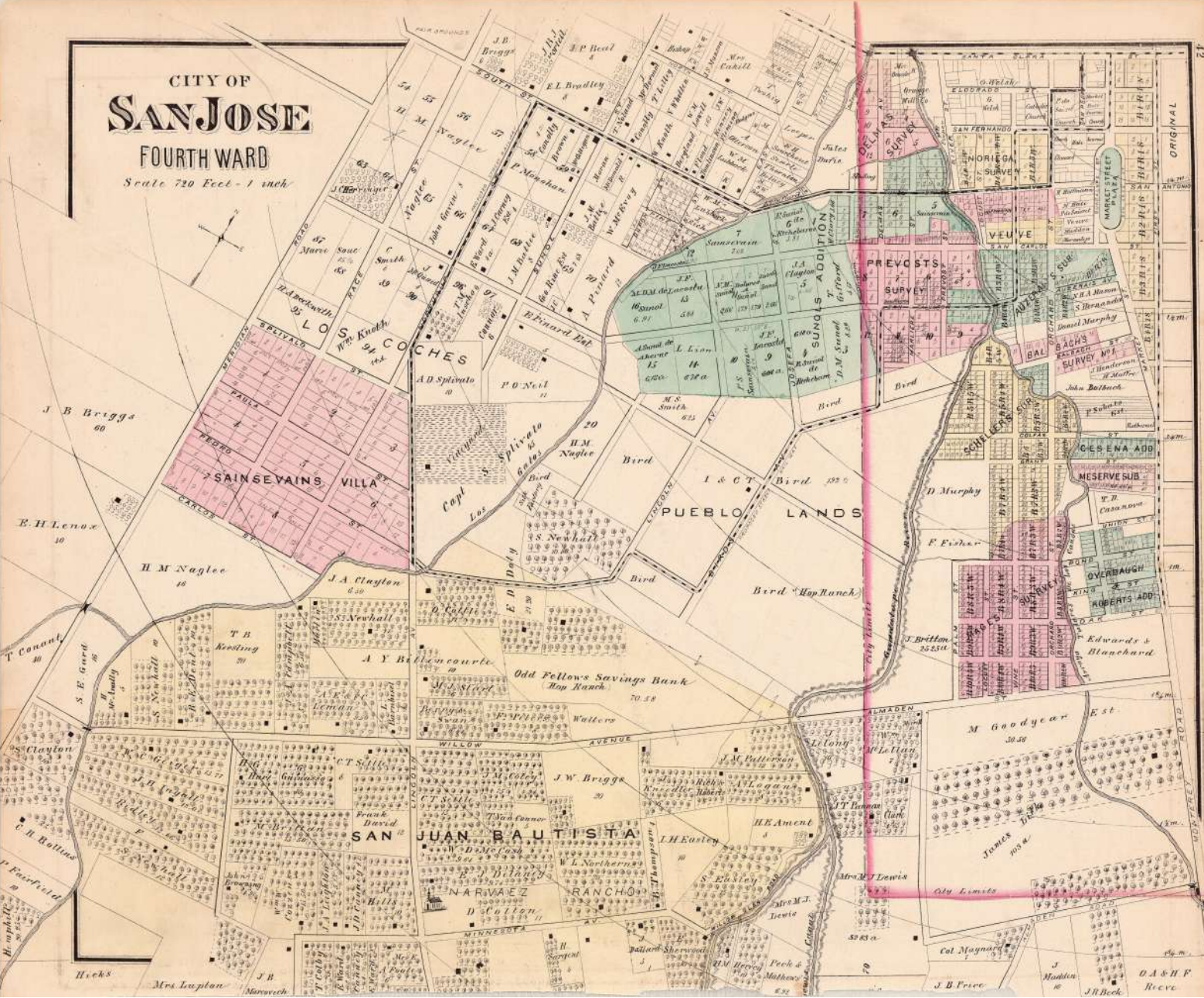
**HAYES SUBDIVISION OF B.R. 10 N.**  
 Scale 200' = 1"

SANTA CLARA ST.										
1	2	3	4	5	6	7	8	9	10	11
12	13	14	15	16	17	18	19	20	21	22
23	24	25	26	27	28	29	30	31	32	33
34	35	36	37	38	39	40	41	42	43	44
45	46	47	48	49	50	51	52	53	54	55
56	57	58	59	60	61	62	63	64	65	66
67	68	69	70	71	72	73	74	75	76	77
78	79	80	81	82	83	84	85	86	87	88
89	90	91	92	93	94	95	96	97	98	99
100	101	102	103	104	105	106	107	108	109	110
SAN FERNANDO										



# CITY OF SAN JOSE FOURTH WARD

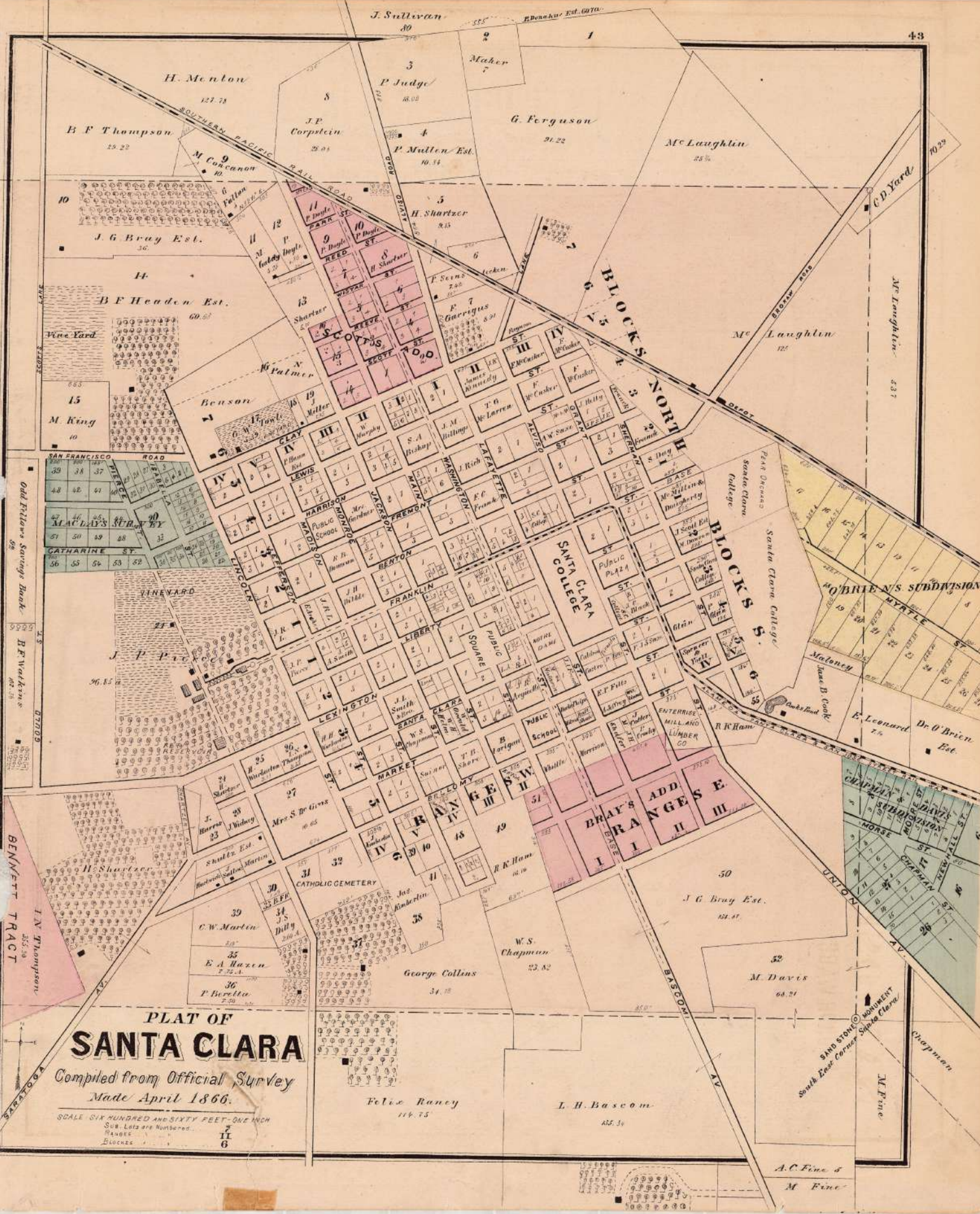
Scale 720 Feet - 1 inch



ORIGINAL

DA&H F  
Rec'd





**PLAT OF  
SANTA CLARA**

Compiled from Official Survey  
Made April 1866.

SCALE SIX HUNDRED AND SIXTY FEET - ONE INCH  
Sub-Lots are Numbered.  
RANGES 11  
BLOCKS 6

Odd Fellow's Savings Bank  
B.F. Walker's

BENNETT TRACT  
I.N. Thompson

SING STONE MONUMENT  
South East Corner Santa Clara

M.F. Fine

A.C. Fine &  
M. Fine

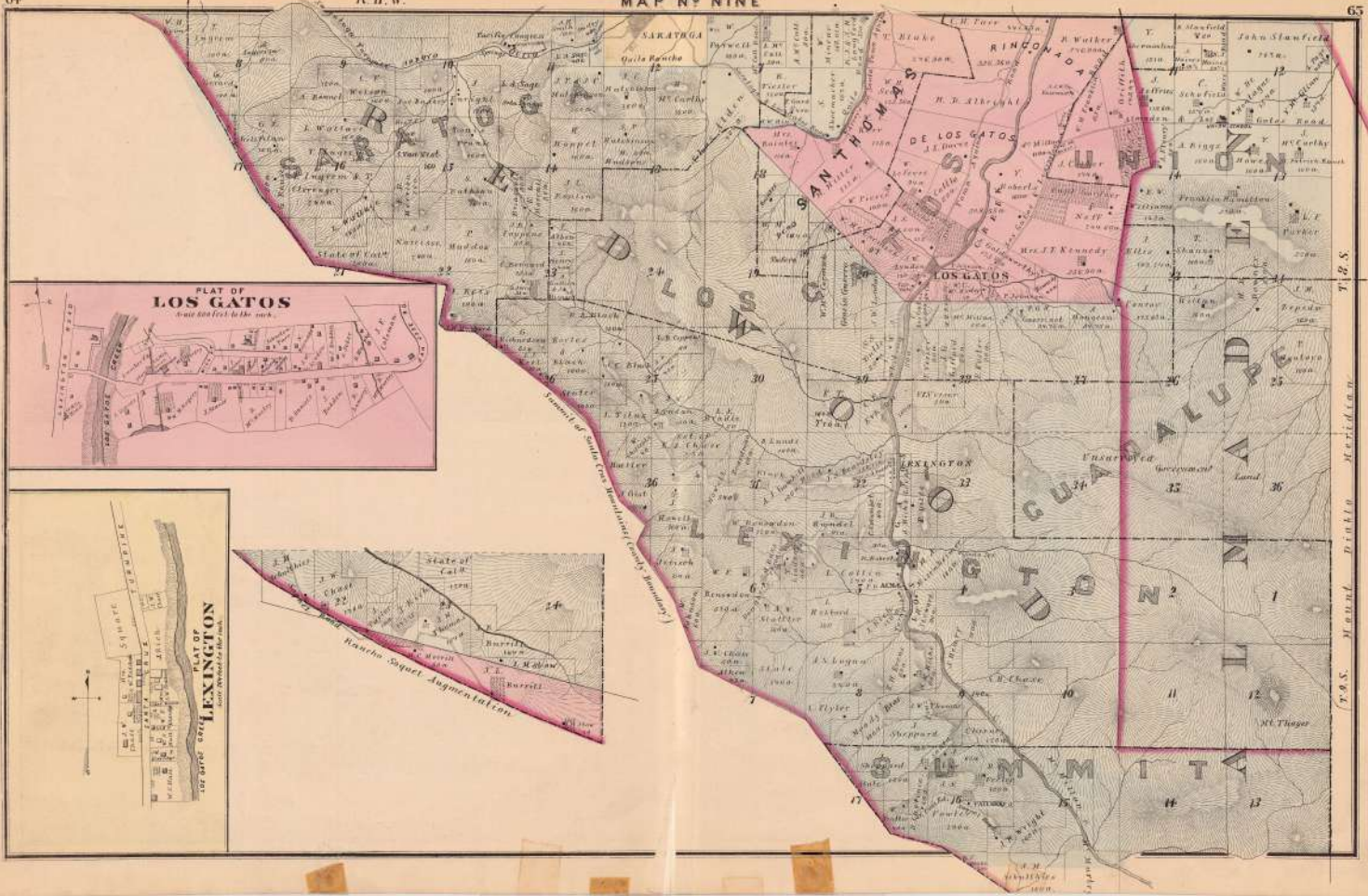








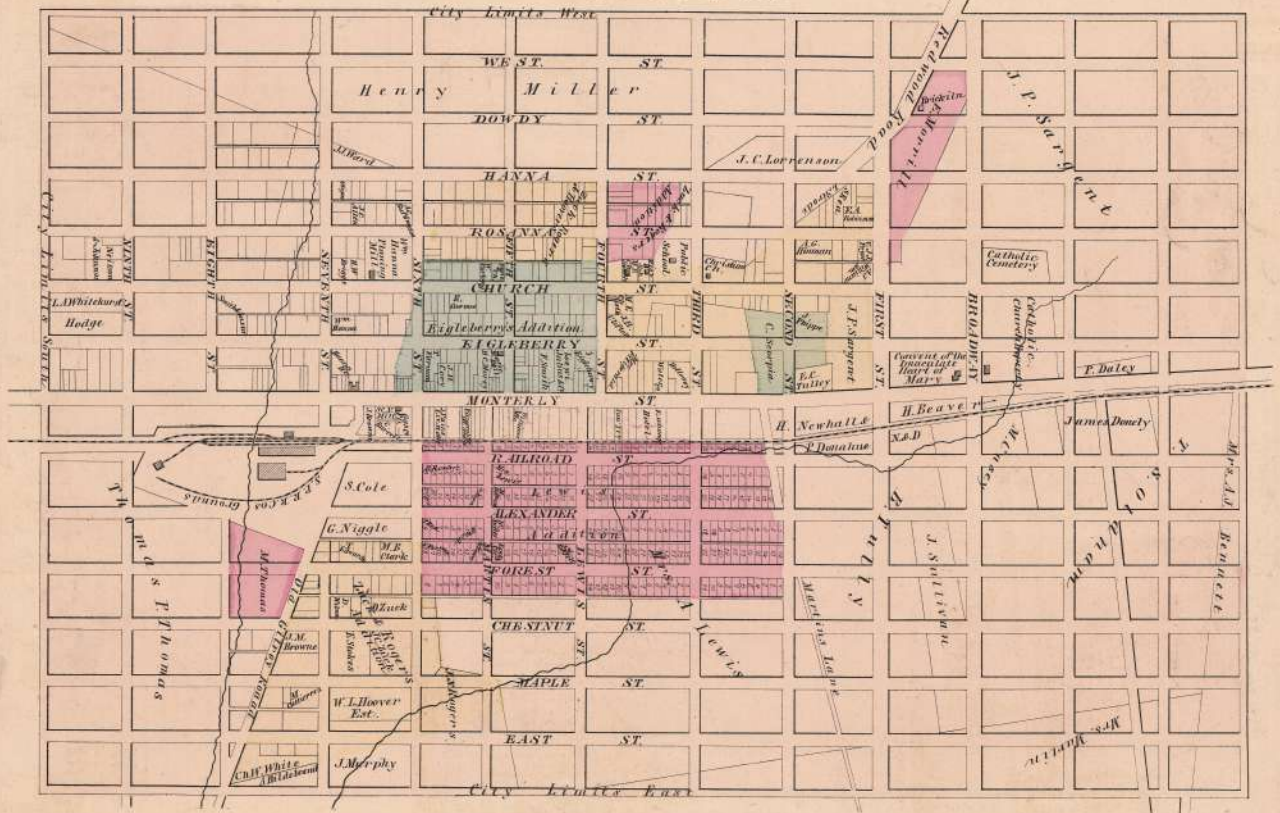






# CITY OF GILROY

Scale of 800 Feet to one Inch

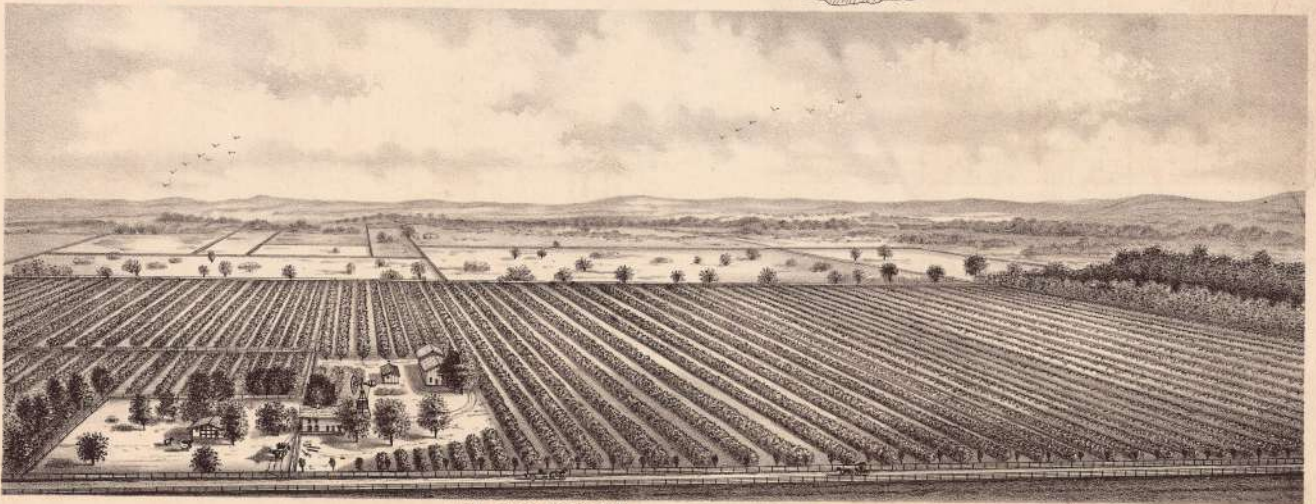








MAP NUMBER TWELVE



LIVE OAK VINEYARD, NEAR SAN JOSE, CALIFORNIA.  
N. H. STOCKTON, PROPRIETOR.



